



NEWTECONS®
Build on trust



SYMBOL

OF EXCELLENCE

With the utmost enthusiasm and spirit of constant innovation, Newtecons is noted as a leader in the construction industry throughout Vietnam and the region. Newtecons represents **superior values** to Clients, proven by remarkable projects delivered over time; a **trusted contractor** for winning and delivering many successful domestic and foreign investors developments; and a **symbol of future** where the Newtecons team sow kindness to reap sustainable development, and pioneer new techniques to conquer new pinnacles in construction.

SYMBOL OF VALUE

Symbol of Value description	03
Key reference projects	05
Message from Chairman of the Board	13

SYMBOL OF TRUST

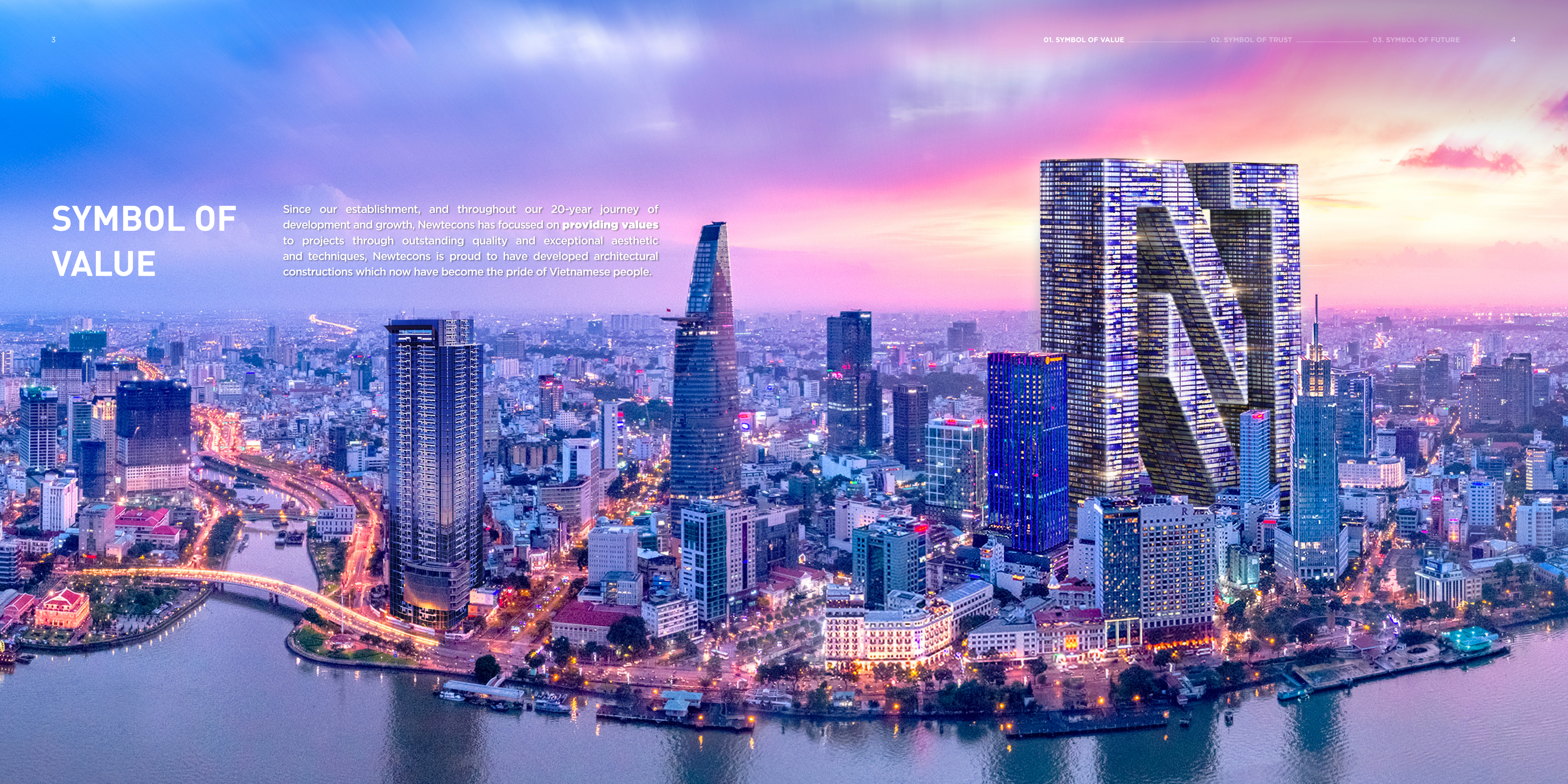
Symbol of Trust description	15
The journey of establishing credibility	17
Board of Directors	19
United and dedicated team	23
Outstanding ability, unwavering commitment	27
Key achievements	51

SYMBOL OF FUTURE

Symbol of Future description	101
Our Vision - Mission - Core values	105
Corporate social responsibility	107

SYMBOL OF VALUE

Since our establishment, and throughout our 20-year journey of development and growth, Newtecons has focussed on **providing values** to projects through outstanding quality and exceptional aesthetic and techniques, Newtecons is proud to have developed architectural constructions which now have become the pride of Vietnamese people.



KEY REFERENCE PROJECTS

LONG THANH

INTERNATIONAL
AIRPORT

Long Thanh International Airport is a major national transport infrastructure project that has significant implications for the growth of the aviation industry in particular, the socioeconomic development of the southern key economic region, and Vietnam in general. Its design is inspired by the image of a stylized lotus flower, representing a strong will to succeed and aspirations.

Employer
Airports Corporation of Vietnam (ACV)

Type of project
Construction and installation of passenger terminal building

Role
Contractor of VIETUR Joint Venture

Scale
5,000 ha

Construction Duration
39 months

KEY REFERENCE PROJECTS

GRAND MARINA SAIGON

Grand Marina, Saigon is a large-scale complex with diverse functions ranging from luxury apartments to offices and commerce. Developed by Masterise Homes Group and world-class hotel brand Marriott International, the project is truly accomplished the mission of being a mega project situated at the Saigon's most sought-after location.

Employer
Masterise Homes Real Estate Development Co., Ltd

Type of project
Luxury apartments, offices, commercial centers

Role
Design & Build General Contractor

Scale
5 basements and 3 towers, 47 floors each tower

Construction Duration
40 months



KEY REFERENCE PROJECTS

FULBRIGHT

UNIVERSITY
VIETNAM

Fulbright University Vietnam (FUV) is invested by 100% foreign capital. Under the sponsorship of the US Government, FUV operates as an independent, not for profit entity, aiming to bring world-class education quality to Vietnamese students. The FUV new campus project is a bespoke new campus specially designed to serve the learning, teaching, training and research of thousands of domestic and international students. The FUV campus is designed around strong sustainability criteria, and shall be certified LEED Gold, LEED Neighbourhood and EDGE Platinum standards.

Employer
Fulbright University Vietnam Corporation

Type of project
Education

Role
Design and Build contractor

Scale
150,000 m²

Construction Duration
24 months

KEY REFERENCE PROJECTS

ONE CENTRAL HCM

Newtecons is proud to deliver luxury mixed use projects, including a 6-star branded apartment complex, located in the heart of Saigon. With a unique design of the emblematic Asian dragon holding a gem, One Central HCM is fast becoming an architectural highlight in the city, and is likely to be a landmark development on the Ho Chi Minh City skyline in the future.

Employer
Saigon Glory Limited Liability Company

Type of project
Apartment, office, commercial area

Role
General contractor

Scale
6 basements, 10 podiums, 46 storeys

Construction Duration
30 months



Together, one vision, one direction, Newtecons is constantly growing, affirming our position as the leading construction general contractor in Vietnam, creating symbols of value, trust and future.

“For over two decades, Newtecons has steadfastly navigated numerous challenges, solidifying its position as a premier construction contractor in Vietnam. Our approach transcends the mere number of projects; we are dedicated to forging timeless values not only for our clients and partners but also for the broader community and society.

Newtecons is proud of its guiding principle, “Building on a Foundation of Trust.” We uphold our commitment and credibility in every project, ensuring the highest value for all stakeholders. Integrity is the compass for our actions, allowing us to garner the trust of both domestic and international investors and pave the way for global partnerships.

At the core of our operations is a commitment to professionalism. Newtecons relentlessly pursues and implements cutting-edge technical solutions and optimal construction methodologies to fulfill the most demanding requirements from our clients. The projects we complete serve as proof of our technical expertise and stand as icons of pride and enduring value.

We place significant emphasis on cultivating a workforce that is both dedicated and talented. By fostering a respectful and nurturing work environment, we ensure that every individual is valued and empowered. We believe that the success of Newtecons is a reflection of the collective achievements of our extended family.

Driven by our ethos of “Integrity - Professionalism - Fairness,” Newtecons is committed to continuing our mission to create structures that are not only aesthetically pleasing and durable but also enhance quality of life, contribute positively to society, and build a brighter future. Anchored by our core values, we are devoted to continuous growth and collective efforts to erect a beacon of trust, value, and visionary achievement.”

Mr. NGUYEN BA DUONG
Chairman of The Board

SYMBOL OF TRUST

“Build on Trust” is always displayed next to the Newtecons brand because we believe that our credibility is a measure of the growth and sustainability of an enterprise in the construction industry. It is built around sincerity, integrity, dedication and effort of Newtecons people that have instilled a **symbol of trust** in the minds of clients, partners and the community.

CREDIBILITY KINDNESS
PROFESSIONALISM

THE JOURNEY OF ESTABLISHING

CREDIBILITY

2003

Established F.D.C. Real Estate Investment Construction Joint Stock Company.

2009

Participated in the construction of the premium apartment complex - Indochina Plaza Hanoi commercial and service center, which won 5 honorable regional awards for interior design and architecture.

2011

Established Waterproofing division, specializing in constructing and providing waterproofing products and solutions for constructions. Waterproofing division, a part of F.D.C, is the partner of multiple major contractors across the country.

2012

Marked a significant growth of F.D.C when investors selected F.D.C as the General Contractor for key projects: Phu My 3, Texhong Ngan Long Factory, Jotun Factory, etc.

2013

Established Aluminium and Glass division, and developed the brand through many major projects: Vinhomes Central Park III, Regina Hai Phong factory, Big C Ha Long, etc.

2015

Participated in the construction of CT5 Masteri Thao Dien tower, reached project sales of 1,000 billion.

2016

Participated in the construction of the "mega-project", Landmark 81 - the tallest building in Vietnam. F.D.C was responsible for the elevator core and steel structure, which required the highest expert techniques of Landmark 81 project.

2017

Listed in Top 10 Prestigious construction contractors and Top 500 Fastest Growing Enterprises in Vietnam.

2018

Continued to be listed in Top 10 Prestigious construction contractors and Top 500 Fastest Growing Enterprises in Vietnam; received a Certificate of Merit from the Ministry of Labor, War Invalids & Social Welfare for achievements in occupational safety and health for 3 consecutive years.

2019 - 2020

Changed name to NEWTECONS Construction Investment Joint Stock Company. Honored in Top 50 Fastest Growing Enterprises in Vietnam, and one of Best Companies to Work for in Asia (HR Asia Awards)

2021

Listed in Top 10 Prestigious Construction Contractors and Top 50 Fastest Growing Enterprises in Vietnam. Newtecons inaugurated the Newtecons Tower, marking a proud milestone in the process of expansion across the globe.

2022

Outstanding growth with revenue of over VND 10,000 billion and recognition as one of Vietnam's Top 5 Prestigious Construction Contractors.

2023

Winning the bid for the Long Thanh International Airport project. Revenue exceeds VND 11,500 billion.

2024

Won the ASEAN-OSHNET Excellence Award 2024 for enterprises with outstanding occupational safety and health management systems, organized by the Ministry of Manpower of Singapore, and honored as one of the "Top 50 Corporate Sustainability Awards 2024" (Top 50 CSA).



BOARD OF DIRECTORS



Mr. VO THANH LIEM
General Director

Mr. Vo Thanh Liem, with more than 25 years of experience, has held various key positions in Vietnamese top construction enterprises. He officially becomes the General Director of Newtecons since June, 2022.

As a person with a lively, enthusiastic and fierce personality, as well as the ability to expand relationships, connect with major domestic and foreign investors, he is trusted to take the lead and help Newtecons affirm its position as the leading Construction General Contractor in Vietnam.

Mr. NGUYEN QUANG THUY
Managing Director



Mr. Nguyen Quang Thuy has over 28 years of experience in the construction industry. As a member of the company since its establishment, he has contributed to the creation of management systems at construction sites, and trained many generations of competent managers, supervisors, and engineers for Newtecons.

With remarkable expertise, technique and extensive management experience, along with the ability to quickly rally human resources, he has given rise to successful projects throughout the history of Newtecons brand establishment, making it as strong as it is today.



Mr. LE DUC BUU
Managing Director

Mr. Le Duc Buu has been entrusted with the responsibility of an Operations Director at Newtecons since early 2021. Mr. Buu has over 20 years of working in the construction industry and held many important positions at leading construction companies in Vietnam.

With a wealth of experience and diligence in his profession, Mr. Buu has conquered projects after projects, from ones requiring refined aesthetics, to larger ones demanding special quality in a short span of time.

He is a young, enthusiastic, highly disciplined leader who pays close attention to his colleagues and focuses on team training, building and bonding activities.



Mr. NGUYEN TRUONG DUY
Managing Director

Mr. Nguyen Truong Duy is a serene manager, meticulous in work and perceptive in management. The projects of which he is in charge always acquire outstanding quality and receive high satisfaction from the Employers.

As a young leader with early exposure to advanced technology from developed countries, he regularly undertakes foreign projects, and industrial projects requiring strict technical skills.

In addition to professional activities, he also takes part in training the next generation of Newtecons to prepare them with methodical management skills and structured thinking, to build a more and more thriving Newtecons.



Mrs. HA TIEU ANH
Finance Director

Mrs. Ha Tieu Anh, with over 28 years of experience in financial management at Vietnamese top construction corporations, has established a stable and explicit financial system for Newtecons with her expertise and methodical management.

With her sophistication, flexibility as well as determination, Mrs. Anh has inspired and guided the office staff to solidarity and collective strength, to become a reliable backing force, assisting the Construction Division in achieving fruitful results.

Mr. DO NGUYEN THANH NHAN
Managing Director

Mr. Do Nguyen Thanh Nhan has more than 23 years holding many important positions in both construction sites and office at leading construction corporations in Vietnam. Today, Mr. Nhan has made many marks in his career, especially his contributions at Newtecons.

A person with a professional approach and a sincere, warm demeanor - that's the impression of Mr. Nhan through the eyes of his colleagues.



Mr. NGO DINH NGOC QUANG
Managing Director

Mr. Ngo Dinh Ngoc Quang has left his mark in many iconic projects across the country such as Landmark 81, Dai Quang Minh Urban Area, Diamond Island II, Hilton Saigon,... after over 23 years in the construction industry in Vietnam.

Known for his calm, meticulous nature, highly specialized skills, passion, and a positive attitude, he has won not only the trust of clients and partners, but also the heart of colleagues and employees.



UNITED AND DEDICATED TEAM

Newtecons is currently one of the enterprises with the best working environment and welfare program in the construction industry. Newtecons has been recognised by the HR Asia Awards as one of **the best working environments in Asia** for many consecutive years. Each officer, each employee always considers that mutual success of Newtecons is the career and legacy of a lifetime, thereby developing their attachment and eagerness to learn while demonstrating their capabilities.



WORKING ENVIRONMENT

TRANSPARENCY EQUITY

We understand that it is imperative to ensure transparency-equity from evaluating performance and capacity to building a development roadmap, as well as applying organizational policies, so as to guarantee that all members of the company are equal, bringing benefits to employees and to the company as a whole.

COOPERATION SINCERITY

We aim for mutual understanding through direct and sincere conversations. Leaders are always willing to listen and give guidance to employees; peers are willing to share and support; and employees have confidence in each other, are open and willing to learn from each other to accomplish mutual goals.

YOUTH ENTHUSIASM

With our team of young professionals, the working environment at Newtecons is always full of energy, innovation, and courage to put thoughts into action, and employees sparing no effort in work as well as other activities.

PROFESSIONALISM CREATIVITY

Newtecons provides the best conditions for employees to work from modern equipment, spacious workplace to safe and clean environment. The open working space maximizes creativity, allowing employees to further innovate themselves and adapt to today's ever advancing development.



PRACTICAL WELFARE, WORTHY TREATMENT

Recognizing and appreciating each employee's contribution, Newtecons always updates and strictly abides by the current regulations of the government. Salary and bonus policy is guaranteed to be timely, appropriate and flexible in favor of employees.

We particularly care about both physical and mental health of all employees by applying various welfare policies: annual health check, comprehensive health care insurance, travelling packages, etc.

For those who work at remote projects, we provide travel allowance, paid leaves, accommodation assistance and offer daily meals to ensure employees' comfort and good health.

Newtecons also organizes comprehensive training through internal training or sending employees to study and research at domestic and foreign schools, institutions and centers; coupled with sustainable and suitable promotion paths.

Newtecons is constantly developing, improving and supplementing our welfare programs and remuneration policies for the better, with Newtecons becoming the "second family" for many employees, developing a culture where all can contribute and develop to achieve together.



OUTSTANDING ABILITY, UNWAVERING COMMITMENT



TYPE OF PROJECT

63%
RESIDENTIAL

35%
INDUSTRIAL

2%
INFRASTRUCTURE

ROLE IN PROJECT

DESIGN & BUILD CONTRACTOR **22%**

GENERAL CONTRACTOR **78%**

REGIONS SERVED

20%
NORTH

13%
CENTRAL

67%
SOUTH



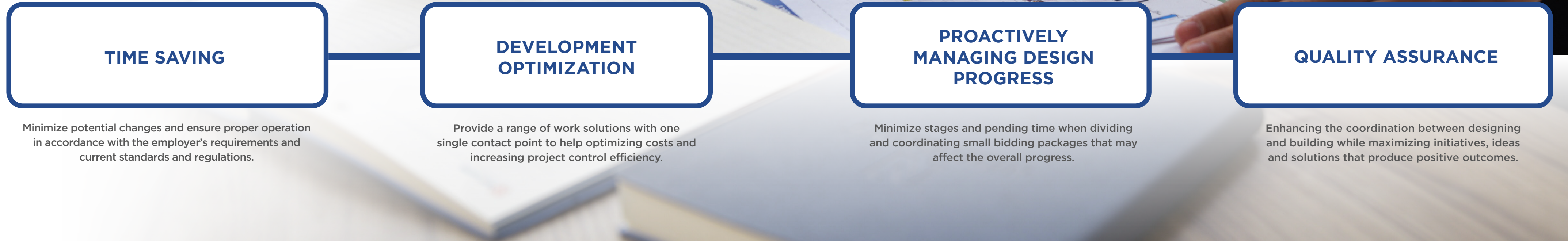
FIELDS OF OPERATION

DESIGN AND BUILD

Design and Build (D&B) is an advanced development model that has been applied by many renowned contractors around the world. This model optimizes efficiency by combining the tasks of designing and building into one, shortening the construction time while saving costs and human resources. However, the D&B model is not easily executed, especially when applied to large-scale and complex projects. Therefore, the developer's biggest concern is the ability and capacity in both design and construction.

Aside from being a member of Vietnam Green Building Council, Newtecons also has extensive experience in designing and building for various projects meeting Green Standards (LEED - USA), LOTUS (Vietnam), EDGE (UK/IFC).

Newtecons guarantees to offer our developers and investors a meticulously designed plan, integrating the optimal construction methodology in one service. This is accompanied with superior construction techniques and methods, can save up to 30% of project implementation time (including design, license and construction) and 10-15% of the cost, as described below:



TIME SAVING

Minimize potential changes and ensure proper operation in accordance with the employer's requirements and current standards and regulations.

DEVELOPMENT OPTIMIZATION

Provide a range of work solutions with one single contact point to help optimizing costs and increasing project control efficiency.

PROACTIVELY MANAGING DESIGN PROGRESS

Minimize stages and pending time when dividing and coordinating small bidding packages that may affect the overall progress.

QUALITY ASSURANCE

Enhancing the coordination between designing and building while maximizing initiatives, ideas and solutions that produce positive outcomes.

GENERAL CONTRACTOR

With excellent knowledge, experience and capacity in the field of construction and a comprehensive management system, Newtecons is becoming a guarantee of credibility and quality for a variety of large-scale projects.

As the General Contractor, Newtecons undertakes all tasks from foundation work, basement and main structure, to finishing touches and landscape infrastructure. We emphasize the importance of consulting to not only provide the employers with in-depth and comprehensive solutions, but also propose optimal techniques, construction methods, and materials sources.

With a streamlined management model, Newtecons satisfies even the most challenging demands of the employers, while strictly complying with all regulations of occupational safety and health.



CONSTRUCTION METHODS

Newtecons applies various latest techniques and most advanced construction methods, from deep basements to special structures such as:

- Topdown and semi-topdown construction
- Transfer beams
- High-rise floors
- Mass concrete
- Sky scrapper



BASEMENT CONSTRUCTION

The construction of underground works in tightly packed urban areas are always tricky and require a safety strategy for the construction area itself, as well as the surrounding properties.

Newtecons' team of experienced experts, consultants and highly-skilled engineers have carried out the construction of multiple underground works with outstanding quality, satisfying the most demanding customers in the most challenging of conditions. Hundreds of deep basements projects across the country are being carried out by Newtecons' utilising various methods, including: topdown, semi-topdown, open cut excavation, circular excavation without bracing system.



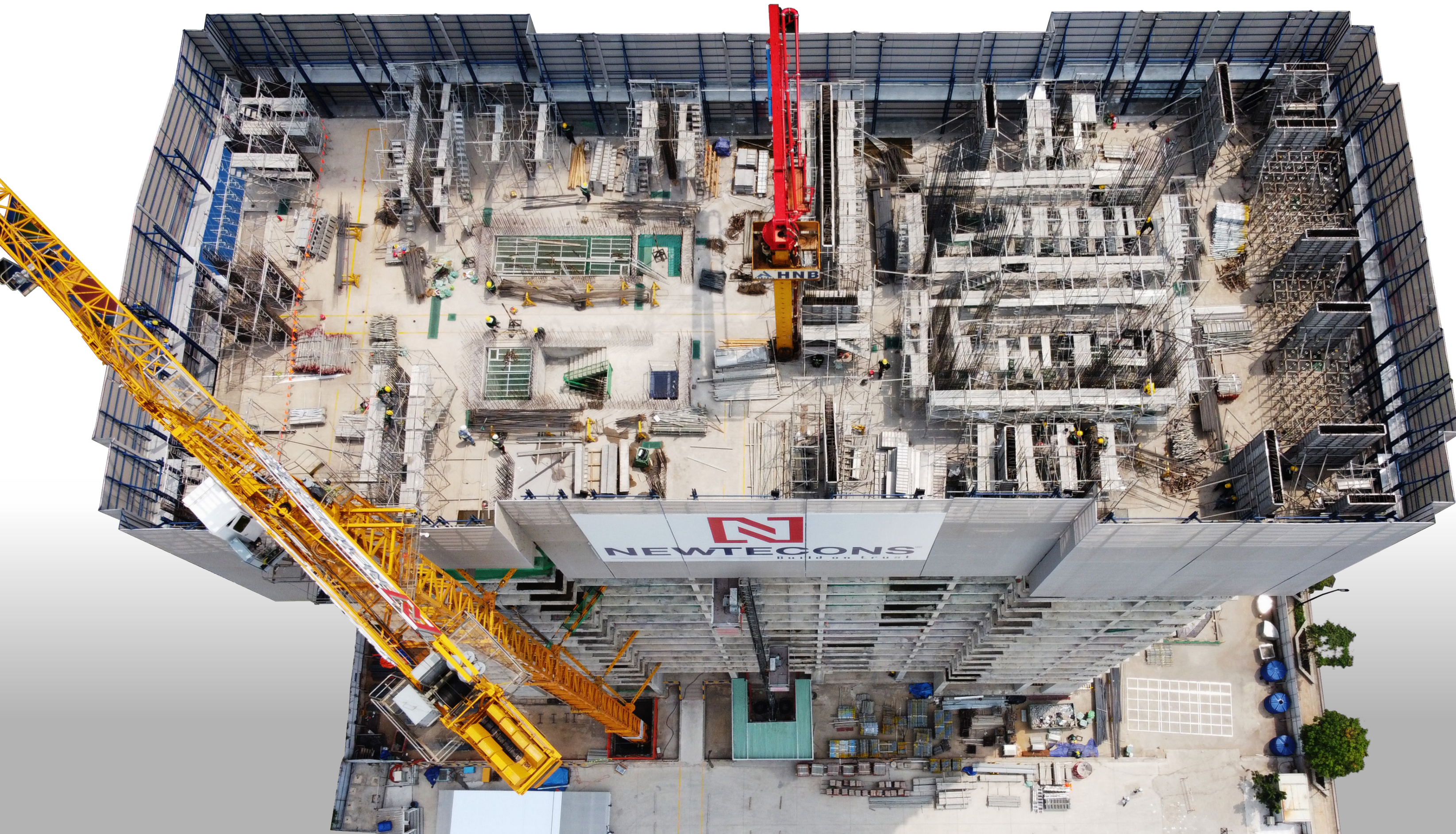
Basement construction at M-Garden City Da Nang



Basement construction at Techcombank Saigon Tower



Basement construction at Wink Hotel Saigon Centre



STRUCTURAL CONSTRUCTION

Structural work - the backbone of any project, plays a particularly important role to deploy the next steps.

With the requirements of quality, progress and safety, Newtecons has established, and strictly follows our processes from planning and design, construction, safety and risk management. We are also pioneers in investing in the most modern structural construction equipment and technology, namely climbing formworks (Jump Form, Gang Form), sliding cover system, assembling reinforced concrete structures, reinforced cage frames, columns and partition walls, etc.

We have also constantly improved other special construction methods, such as transfer floor beams, atrium with heavy-duty scaffolding systems, mass concrete with cooling pipes, column shortening to complete the complex structures with the best quality, ensuring the safety of neighboring works.

Through scientific reports published in renowned journals, Newtecons has received recognition from noted academia and journals for our intensive knowledge and capability in this field.

Structural construction at Lake Tower

CONSTRUCTION COMPLETION

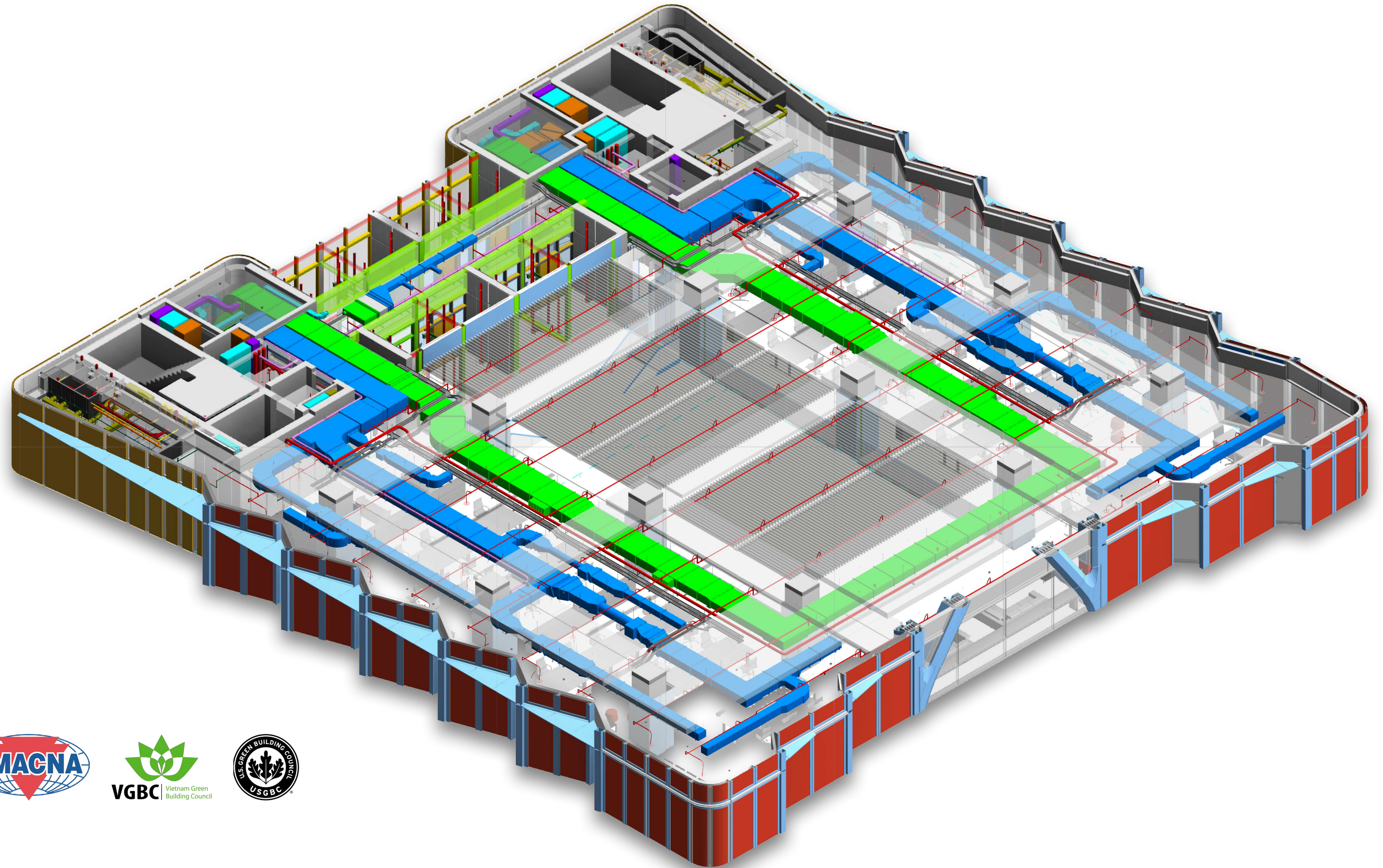
Newtecons is precise and meticulous in the process of project completion to ensure a satisfying experience to our employers and clients. Our team of architects, engineers and skilled workers always perform a thorough process of preparations, and strictly follow technical checklists and aesthetic requirements. We focus on research and application of new materials to keep up with world trends while ensuring quality given domestic climate conditions allowing us to increase values for employers and promote a more efficient project.

Our belief that each project and client's success is a reflection of our credibility, Newtecons' Board of Directors is particularly focussed on internal training for engineers, architects and workers to improve their skills throughout each project.



MEPF CONSTRUCTION

Outstanding ability in the design and installation of M&E systems for civil and industrial projects is possessed by Newtecons. Our group of skilled and knowledgeable engineers is constantly prepared to offer investors the most optimized, suitable, and secure solutions. The M&E Division consistently updates and implements the most recent industry standards, including IEC, NFPA, UL/FM, SMACNA, and LEED, in keeping with its philosophy of “always learning and improving.” Newtecons has been a contractor for major projects such Long Thanh International Airport; Grand Marina, Saigon; Schaeffler Vietnam factory; and Flamingo Dai Lai Resort, having been selected and trusted by the investor.



SAFETY FIRST

Newtecons never compromises with “**Quality and Occupational Safety**”, as safety is the first standard of quality, and only safe constructions result in quality.

SAFETY TRAINING

Prior to each project, the HSSE Department organizes a training session to raise the awareness and sense of safety compliance among employees. Prior to the commencement of each stage of construction, the Site Management Team ensures that procedures are strictly followed, analyzes and assesses potential risks, thereby taking preventive measures and building emergency plans to remove risks.

Periodically, Newtecons HSSE Departments organizes a “Training class on first aid techniques and disaster prevention” delivered by the Red Cross of Ho Chi Minh City, in collaboration with the medical staff of the HSSE Board to perform health checks for all employees.

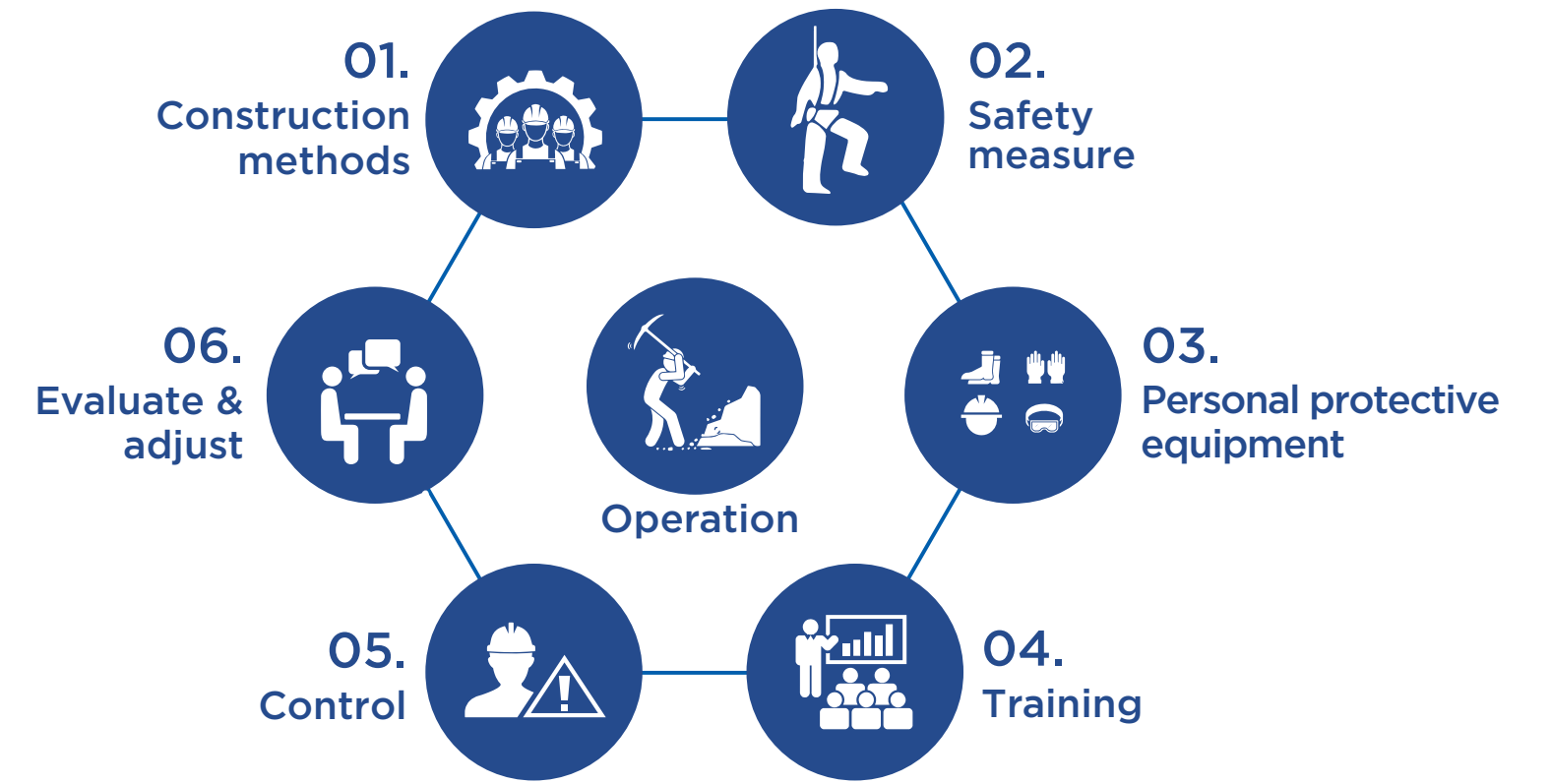
SAFETY PRACTICES IN CONSTRUCTION SITES

For many years, Newtecons has implemented the occupational safety model at the construction site under the direct supervision of the HSSE Management Team and the construction supervisors. The safety system at the project is always operated and continuously improved through periodic inspection and evaluation from the HSSE Board, ensuring a safe working environment at the project.

SAFETY, HEALTH AND ENVIRONMENT MANAGEMENT SYSTEM

Determining occupational safety and health as a prerequisite, Newtecons has established and constantly updated its professional HSSE management process. Our entire team of engineers, construction supervisors and workers regularly attend training sessions to reinforce their knowledge and understanding as well as their absolute compliance.

All Newtecons projects follow the obligations of Vietnamese Law and meet clients’ requirements regarding Health, Safety, Security and Environment. Newtecons’ human resources and machinery always comply with the requirements of ISO 45001:2018 and ISO 14001:2015, as well as the HSSE Management System that Newtecons has established internally and continues to refine and reinforce on a regular basis.



IMPROVEMENTS FOR SIGNIFICANT EFFICIENCY



EQUIPMENT

Apart from being equipped with tower cranes, hoists, aluminium formwork, scaffolding, ringlock and covering grid, etc., in order to ensure safety, progress - productivity and savings during construction, Newtecons is constantly improving and investing in advanced equipment, including inner-climbing tower crane, large cage hoist, sliding formwork.

In order to facilitate the rapid deployment of equipment and materials, Newtecons has three key large-scale storage facilities located throughout Vietnam: Hanoi, Da Nang, Ho Chi Minh City. These locations ensure that additional or replacement equipment is never far away and time lost remains at a minimum.

Core-climbing/floor climbing tower cranes

Conventional solutions such as outdoor vertical cranes often involve a large number of bodies, cuffs, braces, and consume significant transportation costs. Newtecons has boldly utilized floor climbing and inner-climbing tower cranes to diversify construction options and save costs for developers and investors. The tower crane inserted into the floor core for construction has the following advantages:

- Increase capacity and the load range of tower cranes is greater than outdoor vertical cranes.
- Reduce the cost of employing and transporting the body, cuffs, braces.
- Operate safely, especially in the stormy season. Our natural disaster prevention measures are simple but cost effective.

Automatic sliding formwork

To overcome the disadvantages of construction when the weather is not favorable and ensure safety, Newtecons has applied an automatic sliding coffa system with hydraulic jacks, completely independent of tower cranes. Automatic coffa reduces operating risks, improves controllability and quality of concrete surface after pouring.

Aluminum monolithic formwork system for columns, partition walls, dividing walls

Compared to the conventional panelled wood coffa, it is an efficient construction alternative. The strength of complete block construction (columns, walls, beams, floors, and partitions), a straightforward support system, and an open construction site is to provide beautiful concrete surface and shorten construction time.

Large cage hoist

Alimak, a hoist company from Sweden, is renowned for its safety, efficiency and top quality in the world. All Alimak hoists used for Newtecons' projects are satisfied the strict standards of Europe and the G7. Furthermore, at Newtecons' projects, we also upgraded an Alimak Model SC65 hoist with a 3.5m cage into a 4.2m cage and vice versa, which helps to boost productivity and customizability in transporting materials, especially large structures, meeting every specific requirement of the project.

Gang Form system

Gang Form construction technology is currently applied widely around the world because of its exceptional advantages. The entire Gang Form system combined with aluminum formwork and safety nets wraps around the perimeter of the building within 3 floors instead of the conventional scaffolding system and covering grid to ensure management quality and occupational safety. One of the key benefits of Gang Form technology is that deviations in the floor areas are minimized, as the aluminum formwork system helps smooth the surface, shortening the completion progress. As a monolithic concrete construction technology (with simultaneous construction of floors, partitions and boundary walls), the Gang Form system saves human resources, pushes construction progress, reduces the quantity and operation of forms, floor beams, particularly suitable for high-rise buildings.



TECHNOLOGY

Throughout our design, estimating, construction and procurement teams, Newtecons employs specialized software, BIM software (Building Information Modelling) to refine the design, identify conflicts, reduce waste and the need to redesign, estimate quantities and cost, and schedule projects. BIM is particularly beneficial when “Just In Time” deliveries are needed on constricted construction sites. The results of this are optimizing design, the saving of time, increased accuracy in design and a minimisation of costs throughout every stage of the project.

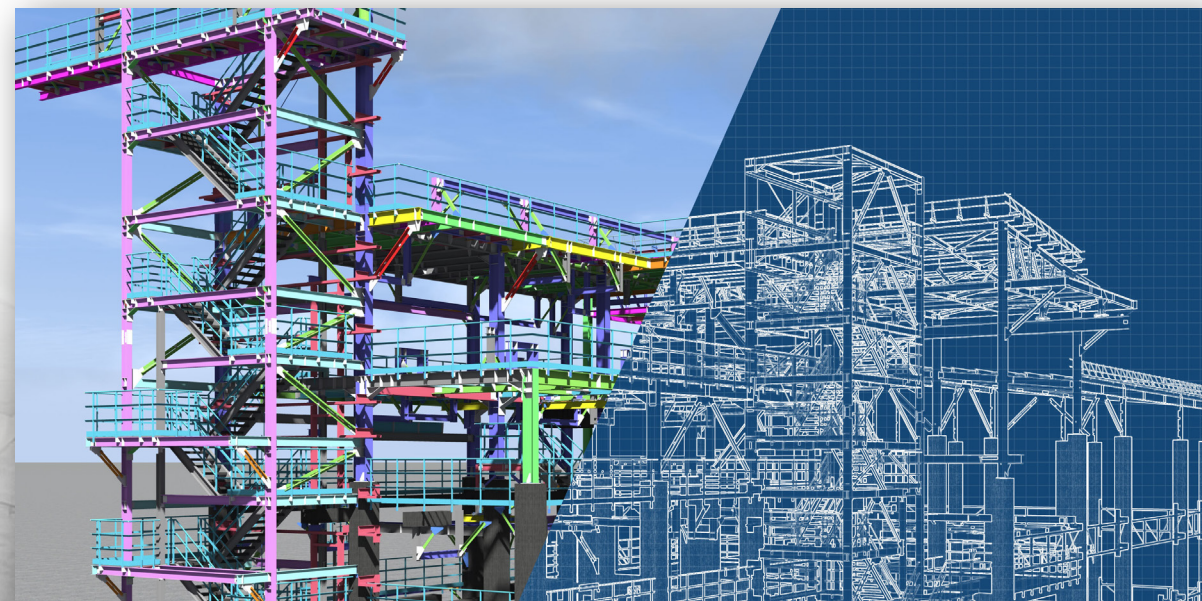
BIM application

We apply BIM in our design process and Revit 3D in construction. Implementing this system in the initial project stages allows careful application and implementation from design to material selection to minimize potential risks throughout the design phase, which will have an impact on the eventual construction works. Newtecons’ team also applies Virtual Reality (VR) in typical projects, providing customers with visual interactive experiences, the ability to interact with their projects prior to completion, and even rearranging the layout if required.



Quantity take-offs application

This allows optimizing costs for investors while strictly controlling the progress of the project. Applying 3D technology and 4.0 techniques to production and business operations helps optimize the process as fast and efficiently as possible.



CERTIFICATIONS

Newtecons has been certified ISO 9001:2015 by the international organization QMS since 2017. Ever since, Newtecons has established and operated a management system, ensuring stable quality of products and services, enhancing general quality, meeting higher needs of clients, thereby increasing the competitive edge of the enterprise and partners.



KEY ACHIEVEMENTS

REVENUE

With an apt business strategy along with human, equipment and technical resources, Newtecons has continuously and sustainably developed, as demonstrated by our consistent presence in the list of 500 Fastest Growing Enterprises in Vietnam.



Billions VND



01. SYMBOL OF VALUE 02. SYMBOL OF TRUST 03. SYMBOL OF FUTURE

OUR CLIENTS



SELECTED PROJECTS

Along the path of our development, Newtecons has successfully accomplished both domestic and foreign developments and participated in the creation of hundreds of projects across Vietnam. Through our credibility and quality, Newtecons has won over many demanding international clients such as Japan, USA, Germany, etc.



Residential Projects



LUMIÈRE EVERGREEN

Employer
TCO Consultant and Real Estate
Joint Stock Company

Role
Design and Build Contractor

Scale
21.728 m², 3 towers, 39 floors

Construction Duration
28 months



MASTERI LAKESIDE

Employer
Masterise Homes Real Estate
Development Company Limited

Role
General Contractor for Structural Works

Scale
230,000m²

Construction Duration
9 months



LUMI HANOI

Employer
Capitaland Real Estate Management
(Vietnam) Ltd

Construction Duration
29 months

Role
General Contractor

Scale
56.000 m², 9 towers, 29 - 35 floors



THE CENTRIC HAIPHONG

Employer
Masterise Homes Real Estate
Development Company Limited

Construction Duration
11 months

Role
General Contractor

Scale
110.000 m², 9 areas, 2 commercial center towers,
249 seven-storey shoptique units



GRAND MARINA, SAIGON

Employer
Masterise Homes Real Estate
Development Company Limited

Role
Design and Build Contractor

Scale
5 basements, 3 towers, 47 storeys

Construction Duration
23 months



ASIANA DA NANG

Employer
Gotec Land Group Joint Stock
Corporation

Role
General Contractor

Scale
3 basements, 34 storeys

Construction Duration
27 months (estimated time)



FLORA MIZUKI MP6-7-8

Employer
NNH Mizuki Joint Stock Company

Role
General Contractor

Scale
3 towers, 20 storeys

Construction Duration
19 months



LUMIÈRE RIVERSIDE

Employer
Parkland Residential and Commercial
Complex Co., Ltd

Role
General Contractor

Scale
PL52: 2 basements, 38 storeys
PL53: 2 basements, 45 storeys

Construction Duration
29 months (estimated time)



THE SÓNG

Employer
An Gia Real Estate Group Joint Stock Company

Role
Design and Build Contractor

Scale
2 basements, 37 storeys

Construction Duration
29 Months



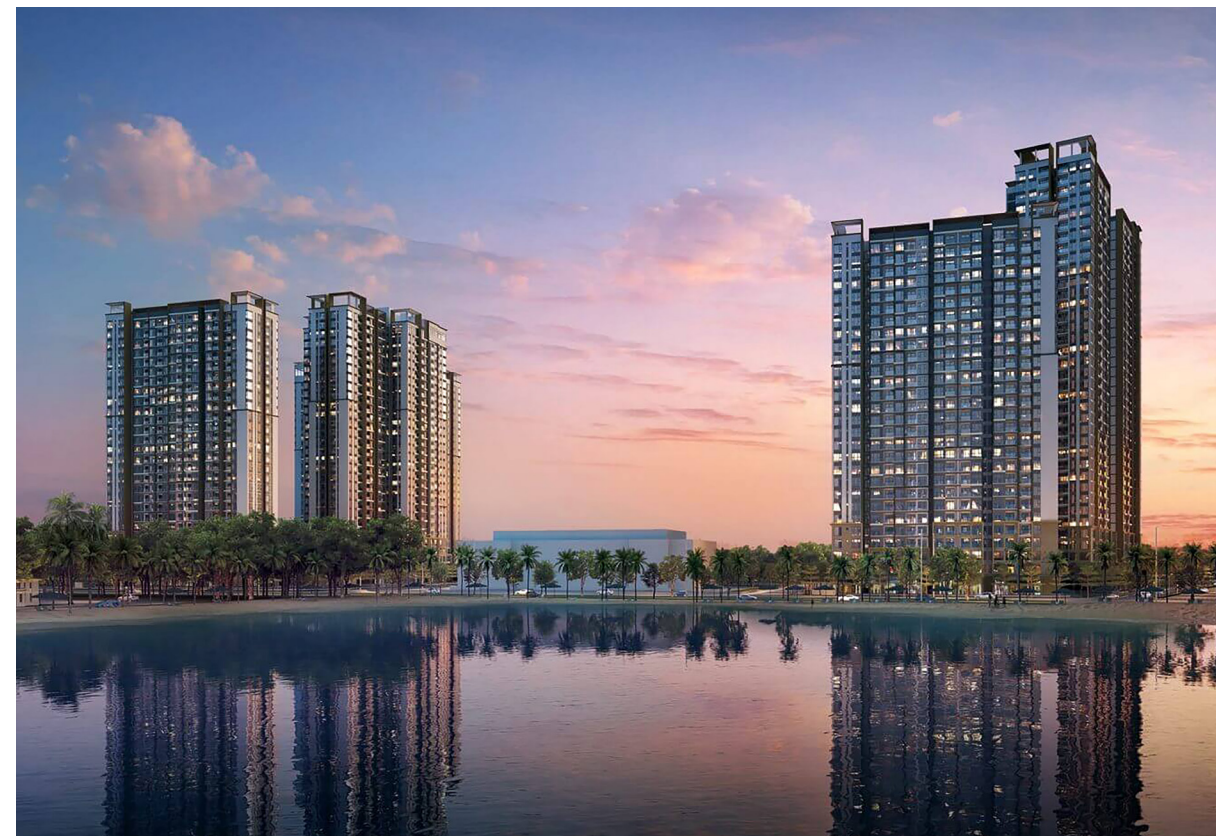
MASTERI WATERFRONT

Employer
Minh Tan Ha Noi Real Estate Company Limited

Role
Design and Build Contractor

Scale
1 basement, 6 towers, including 2 towers with 26 storeys, 2 towers with 27 storeys, 1 tower with 30 storeys, 1 tower with 38 storeys

Construction Duration
25 months (estimated time)



THE NINE

Employer
G.P Invest

Role
General Contractor

Scale
3 basements, 31 storeys

Construction Duration
17 months (estimated time)



PHUONG VIET II

Employer
Phuong Viet Investment and Real Estate Business Corporation

Role
General Contractor

Scale
01 basement, 28 storeys

Construction Duration
18 months (estimated time)



MASTERI THAO DIEN - CT5

Employer
Thao Dien Investment Company Limited

Role
Design and Build Contractor

Scale
1 basement, 45 storeys

Construction Duration
26 Months



SORA GARDENS II

Employer
BTMJR Investment Limited Company - Becamex Tokyu

Role
General Contractor

Scale
2 towers, 25 storeys

Construction Duration
24 months



T&T CITY MILLENNIA

Employer
T&T Group

Role
General Contractor

Scale
1,700 villas

Construction Duration
25 months



VINHOMES SMART CITY

Employer
Vinhomes Joint Stock Company

Role
General Contractor

Scale
2 towers, with 34 storeys and 35 storeys

Construction Duration
12 months



VINHOMES OCEAN PARK

Employer
Vinhomes Joint Stock Company

Role
General Contractor

Scale
1 basement, 2 towers with 26 storeys
and 27 storeys

Construction Duration
19 months



BERRIVER PREMIER

Employer
Developer: Masterise Homes

Role
Design and Build Contractor

Scale
3 basements, 25 storeys

Construction Duration
22 months



VINHOMES GOLDEN RIVER - AQUA 2

Employer
Vinhomes Joint Stock Company

Role
Subcontractor

Scale
3 basements, 50 storeys

Construction Duration
18 months



GRAND BAY HALONG COMPLEX

Employer
BIMLand

Role
General Contractor

Scale
15 villas

Construction Duration
12 months



D' CAPITALE

Employer
Blue Star & Vingroup Joint Stock Company

Role
Main Contractor

Scale
3 basements, 43 storeys

Construction Duration
41 months



FLORA MP9-MPX & FLORA PANORAMA

Employer
Nam Long Group

Role
General Contractor

Scale
3 blocks with more than 400 apartments

Construction Duration
16 months





NEWTECONS TOWER

Employer
DTL Investment and Development Joint Stock Company

Role
Design and Build Contractor

Scale
4 basements, 18 storeys

Construction Duration
19 months



TECHCOMBANK SAIGON TOWER

Employer
Vietnam Technological and Commercial Joint Stock Bank (Techcombank)

Role
General Contractor

Scale
5 basements, 22 storeys

Construction Duration
16 months

CADIVI TOWER

Employer
Vietnam Electric Cable
Corporation - CADIVI

Role
General Contractor

Scale
4 basements, 13 storeys

Construction Duration
16 months



WINK HOTEL SAIGON CENTRE

Employer
Indochina Capital Corporation

Role
General Contractor

Scale
2 basements, 12 storeys

Construction Duration
13 months



ONE HUB SAIGON

Employer
Ascendas Saigon Bund Company Limited

Role
General Contractor

Scale
1 basement, 7 storeys

Construction Duration
10 months



HA NOI ADELAIDE SCHOOL

Employer
Geleximco Group Joint Stock Company

Role
General Contractor

Scale
1 semi-basement, 4 storeys

Construction Duration
8 months



VAN LANG UNIVERSITY PHASE 4

Employer
Van Lang University

Role
Design and Build Contractor

Scale
43,000m², including 3 basements

Construction Duration
20 months (estimated time)



THE DEWEY SCHOOLS

Employer
Gateway Viet Nam Education Joint
Stock Company

Role
General Contractor

Scale
1 basement, 5 storeys, BOH and landscape

Construction Duration
10 months



CENTRAL SERVICE, COMMERCIAL AND HOUSING AREA, CLUSTER 4, WARD 1, SA DEC CITY

Employer
T&T Group

Role
General Contractor

Scale
The Commercial and Service Area: 8,080m²
The Townhouse Area: 1,807m²

Construction Duration
21 months



THE ROYAL DA NANG

Employer
The Royal Danang Limited Company

Role
General Contractor

Scale
1 block with 29 floors and 2 basements

Construction Duration
14 months



M - GARDEN CITY DA NANG

Employer
M Group International Company Limited

Role
General Contractor

Scale
3 basements, 28 storeys

Construction Duration
18 months (estimated time)



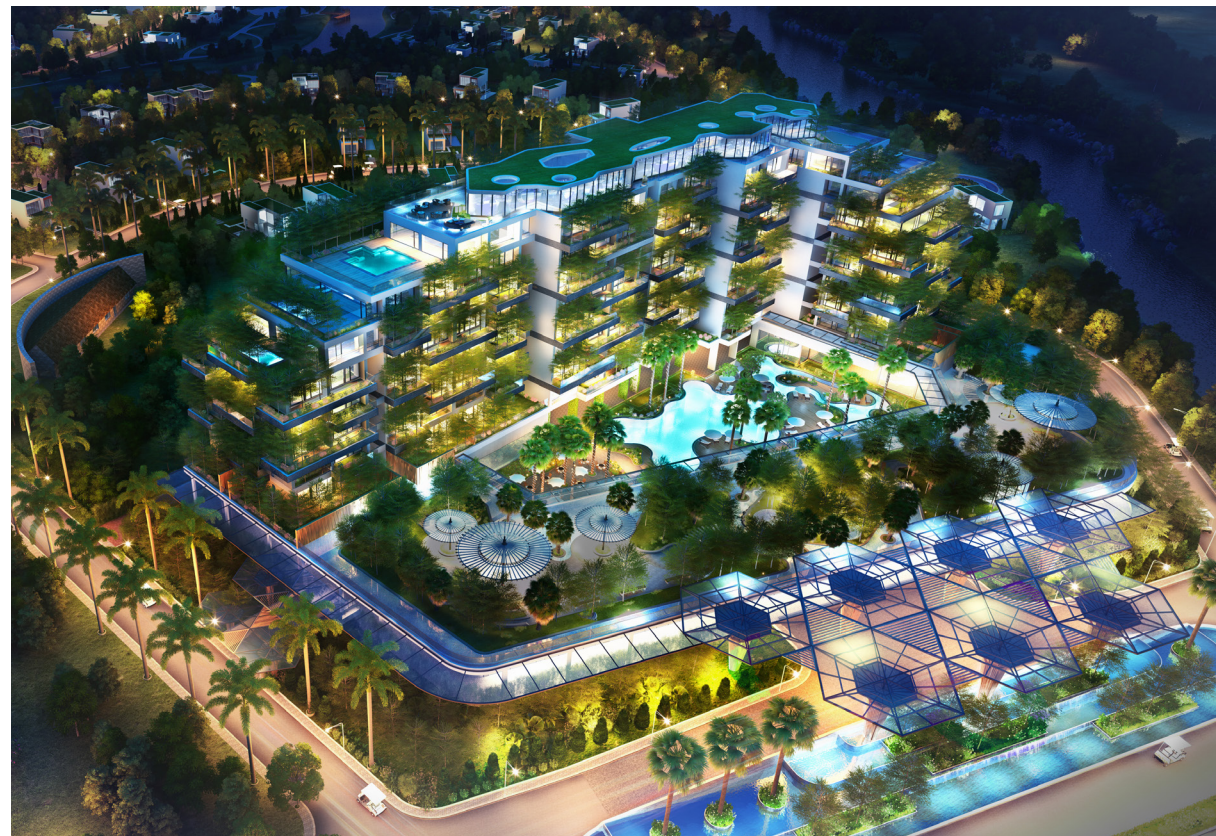
FLAMINGO DAI LAI RESORT

Employer
Flamingo Dailai Resort Joint Stock
Company

Role
General Contractor

Scale
1 basement, 11 storeys, 172 villas

Construction Duration
22 months



MINERA HOT SPRINGS BINH CHAU

Employer
Saigon - Binh Chau Tourism Joint Stock
Company

Role
General Contractor

Scale
53,000 m²

Construction Duration
31 months



MASTERI VILLAS

Employer
Techcomdeveloper & Vingroup Joint
Stock Company

Role
Design and Build Contractor

Scale
184 luxury villas

Construction Duration
10 months



DAKMIL CENTER

Employer
T&T Group

Role
General Contractor

Scale
1 basement, 5 storeys, 4,545 m²

Construction Duration
18 months



SORA GARDENS SC

Employer
Becamex Tokyu

Role
General Contractor

Scale
19,863 m²

Construction Duration
18 months



T&T COMPLEX

Employer
T&T Group

Role
General Contractor

Scale
35,118 m², 118 townhouses with 5 floors
+ shophouse and 5 star hotel: 20 storeys

Construction Duration
14 months



PHUOC THO 1&2 RESIDENTIAL AREA

Employer
T&T Group

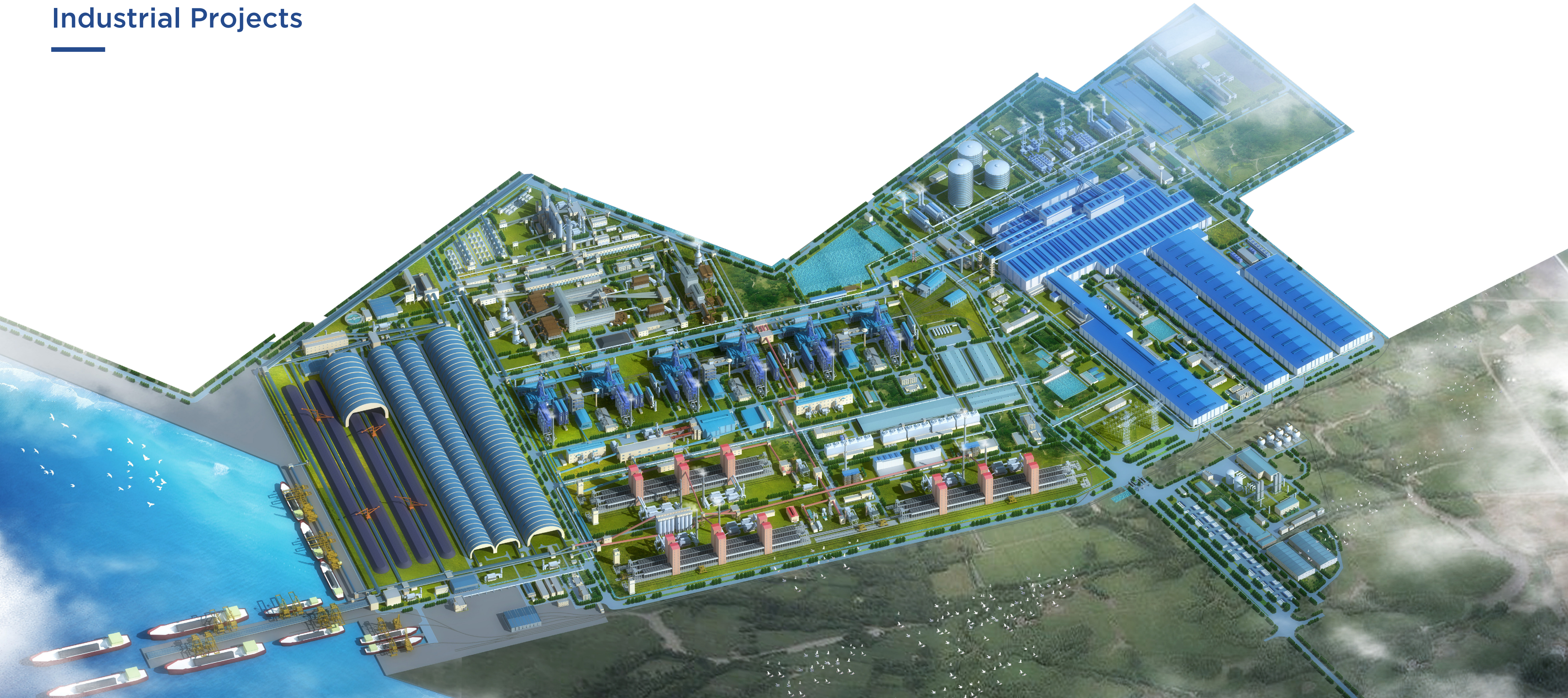
Role
General Contractor

Scale
11.5 ha

Construction Duration
24 months



Industrial Projects



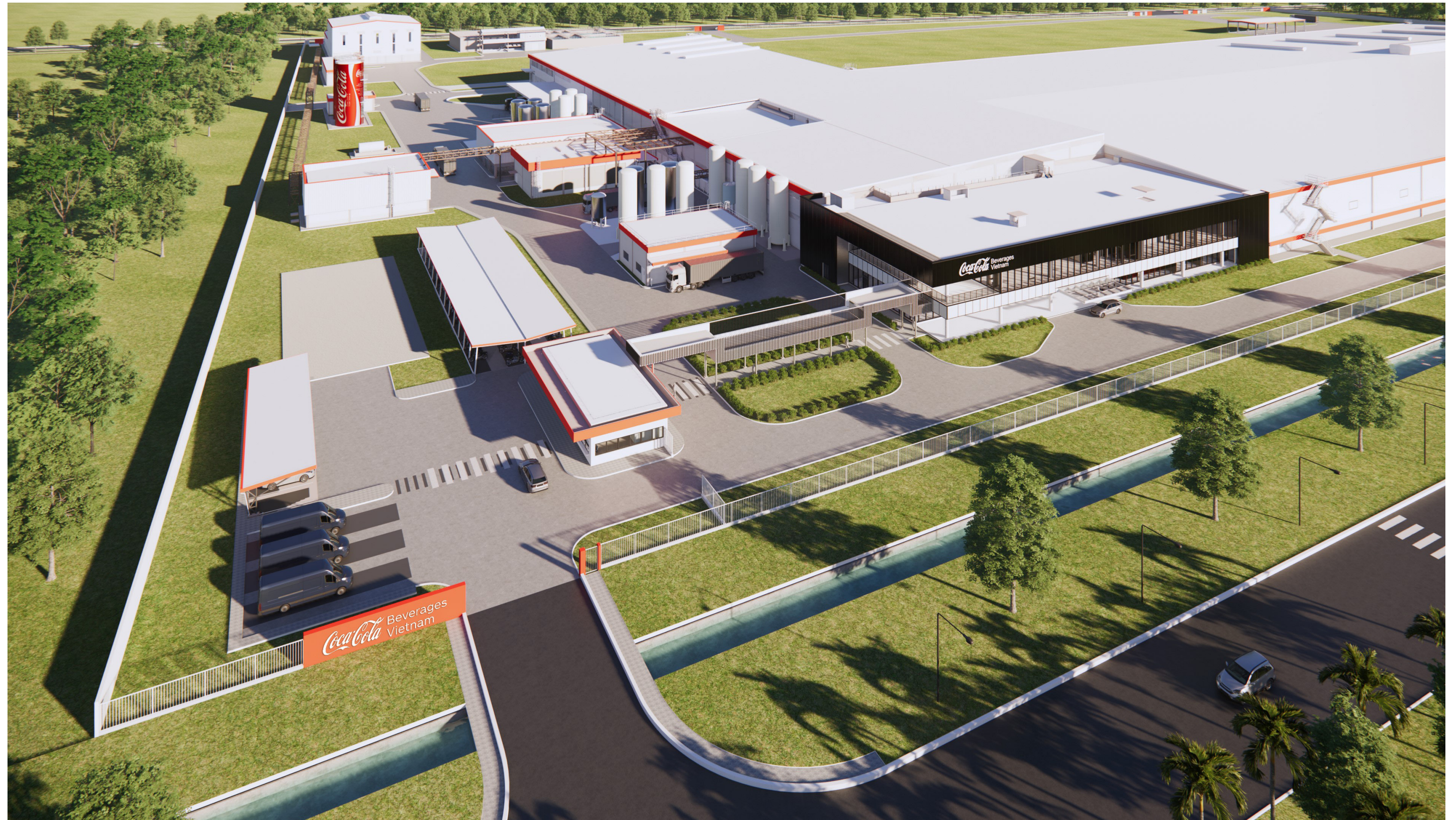
CCBVL LONG AN GREENFIELD FACTORY

Employer
Coca Cola Beverages Vietnam Ltd.

Role
General Contractor

Scale
190,000 m²

Construction Duration
11 months



LONG THANH HITECH INDUSTRIAL PARK – PHASE 1B

Employer
**Amata Long Thanh Urban Development
Joint Stock Company**

Scale
570,600 m²

Role
Infrastructure General Contractor

Construction Duration
12 months



WINLOCK 2A - BWID LONG AN

Employer
Winlock 2A Limited Company

Scale
100,000 m², 4 factories

Role
General Contractor

Construction Duration
15 months



WINLOCK 2A - BWID THUAN DAO

Employer
BW Industrial Development
Joint Stock Company

Scale
122,700 m2

Role
General Contractor

Construction Duration
10 months



WINLOCK 2A - BWID YEN PHONG

Employer
BW Industrial Development
Joint Stock Company

Scale
161,728 m2

Role
General Contractor

Construction Duration
9 months



BOHO DÉCOR FACTORY

Employer
Boho Decor Company Limited

Scale
40,100 m²

Role
General Contractor

Construction Duration
11 months



BM WINDOWS

Employer
BM Windows Joint Stock Company

Scale
15,000 m²

Role
Design and Build Contractor

Construction Duration
5 months



PAIHONG FACTORY

Employer
Paihong Vietnam Company Limited

Role
Design and Build Contractor

Scale
160,000 m²

Construction Duration
22 months



HO NAI - DONG NAI INDUSTRIAL PARK

Employer
KCN Dong Nai Joint Stock Company

Role
Design and Build Contractor

Scale
12,426 m²

Construction Duration
Groundbreaking in June 2021



HOA PHAT DUNG QUAT STEEL FACTORY

Employer
Hoa Phat Group Joint Stock Company

Role
Subcontractor

Scale
167,800 m²

Construction Duration
29 months



MANWAH FACTORY

Employer
Timberland Company Limited

Role
General Contractor

Scale
133,000 m²

Construction Duration
26 months



KYOCERA FACTORY

Employer
Kyocera Document Technology Vietnam
Company Limited

Role
Subcontractor

Scale
116,200 m²

Construction Duration
15 months



BROTEX FACTORY

Employer
Brotex Company Limited (Vietnam)

Role
General Contractor

Scale
30,000 m²

Construction Duration
12 months



WEB-PRO FACTORY

Employer
Design Web-Pro Company Limited
(Vietnam)

Role
Design and Build Contractor

Scale
50,000 m²

Construction Duration
18 months



VINFAST AUTOMOTIVE FACTORY

Employer
Vingroup Joint Stock Company

Role
General Contractor

Scale
50,500 m²

Construction Duration
10 months



BARETT SMART FACTORY

Employer
Barett Craft Beer

Scale
44,057 m²

Role
Design and Build Contractor

Construction Duration
13 months



VIET VUONG 3 FACTORY

Employer
Viet Vuong Group

Role
Design and Build Contractor

Scale
63,400 m²

Construction Duration
12 months



TECHTRONIC TOOLS (VIETNAM) COMPANY LIMITED – MANUFACTURING FACTORY CATEGORY

Employer
TTI Group

Role
D&B General Contractor

Scale
239,587 m²

Construction Duration
12 months



SCHAEFFLER VIETNAM FACTORY

Employer
Schaeffler Vietnam Company Limited

Role
General Contractor

Scale
50,000 m²

Construction Duration
15 months



S-POWER FACTORY

Employer
S-Power (Vietnam) Textile Company Limited

Role
Design and Build Contractor

Scale
49,460 m²

Construction Duration
21 months



WORLDON FACTORY

Employer
Worldon (Vietnam) Company Limited

Role
General Contractor

Scale
187,020 m²

Construction Duration
21 months



TBS WAREHOUSE 6

Employer
Thai Binh Consultant and Construction Investment Joint Stock Company - TBS Group

Role
General Contractor

Scale
51,000 m²

Construction Duration
6 months



QUOC QUANG FACTORY

Employer
Guoguang Electric (Vietnam) Company Limited

Role
Design and Build Contractor

Scale
40,000 m²

Construction Duration
7 months



LONG THAI TU FACTORY

Employer
Tainan Textile Company Limited

Role
General Contractor

Scale
36,700 m²

Construction Duration
10 months



PROJECT 08 - BW THOI HOA

Employer
BW Industrial Development Joint Stock Company

Role
General Contractor

Scale
102,000 m²

Construction Duration
9 months



TEXHONG NGAN LONG FACTORY

Employer
NGAN LONG TECHNIQUE SCIENCE CO., LTD

Role
General Contractor

Scale
50,000 m²

Construction Duration
7 months



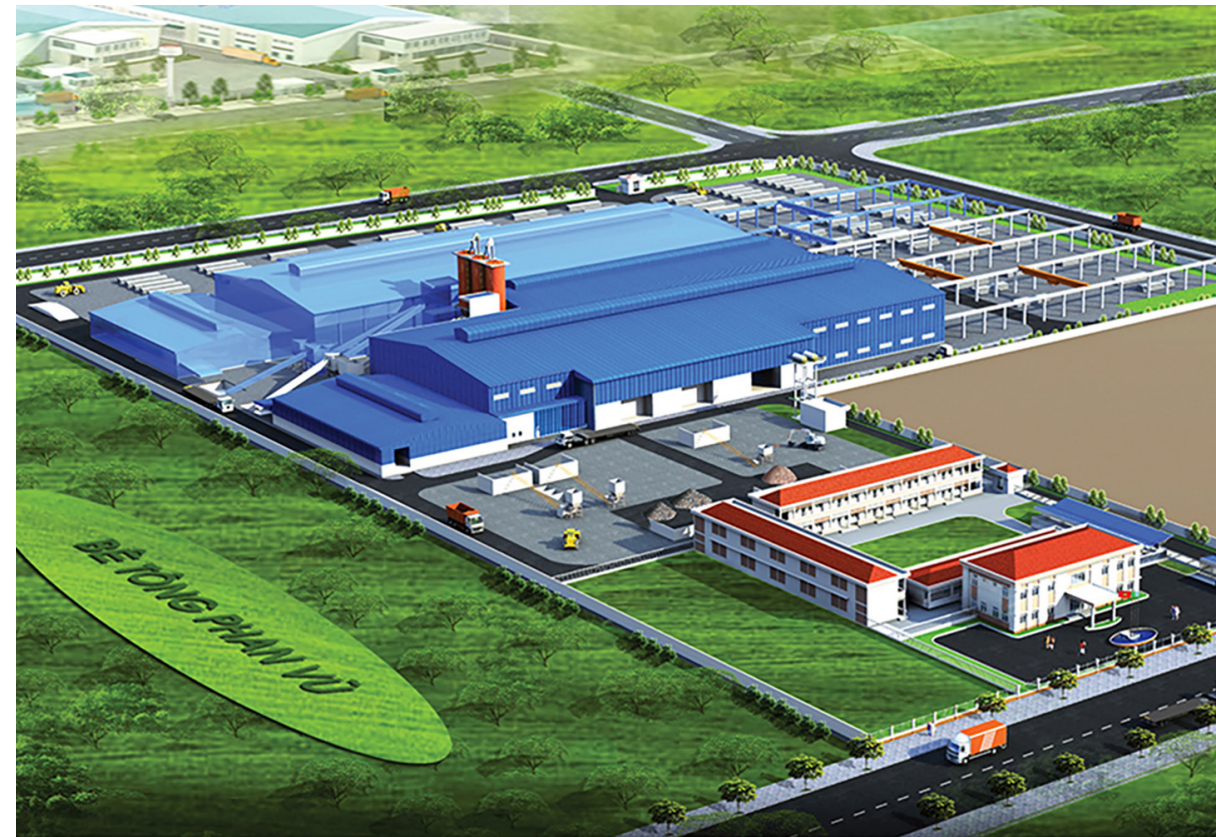
PHAN VU FACTORY

Employer
Phan Vu Quang Binh Concrete Company Limited

Role
Design and Build Contractor

Scale
60,000 m²

Construction Duration
6 months



MARVEL GARMENT FACTORY

Employer
Marvel Garment Company Limited

Role
General Contractor

Scale
85,000 m²

Construction Duration
13 months



GAIN LUCKY FACTORY PHASE 4

Employer
Gain Lucky (Vietnam) Company Limited

Role
General Contractor

Scale
68,000 m²

Construction Duration
16 months



GREEN PLANET DC

Employer
Green Planet Distribution Centre Joint Stock Company

Role
D&B General Contractor

Scale
81,634.30 m²

Construction Duration
8 months



VIETTEL HOA LAC TECHNICAL CENTER

Employer
Viettel Asset Management Company

Role
General Contractor & M.E.P

Scale
21,476 m²

Construction Duration
9 months



WAREHOUSE FOR LEASE OF SAO DAU

Employer
Sao Dau Joint Stock Company

Role
General Contractor

Scale
59,540 m²

Construction Duration
7 months



PROJECT 05 – BW HAI DUONG

Employer
BW Industrial Development Joint Stock Company

Role
General Contractor

Scale
63,000 m²

Construction Duration
6 months



LOGOS BAC NINH LOGISTICS WAREHOUSE

Employer
Logos Group

Role
General Contractor

Scale
81,451 m²

Construction Duration
9 months



Infrastructure Projects

NTT GLOBAL HCMC1 DATA CENTER

Employer
NTT Global Data Centers HCMC1 Co., Ltd.

Role
General Contractor

Scale
1 ha



Infrastructure Projects

WATERPOINT

Employer
Nam Long Investment Corporation

Construction Duration
19 months

Role
General Contractor



INVESTING IN BUILDING INFRASTRUCTURE OF LONG THANH HIGH-TECH INDUSTRIAL PARK

Employer
AMATA CITY LONG THANH JOINT STOCK COMPANY

Construction Duration
12 months

Role
General Contractor

Scale
120 ha



SYMBOL OF FUTURE

Newtecons strives to maintain its position as the number 1 General Contractor in Vietnam by attracting excellent and dedicated professionals and by researching and implementing the most modern construction technologies and practices throughout the company. Along with this, Newtecons also commits to our heart and strength to act and to share with the community, from the achievements in the past to the power of the present to continuously **innovate and create the future**, together.



OUR VISION

We commit to maintain the position as an outstanding Construction General Contractor with leading economic capacity in Vietnam, developing as a multi-industry corporation focusing on construction as its core field.

OUR MISSION

Newtecons uses credibility and quality as the foundation to develop constructions of Vietnamese stature. We commit to provide the highest benefits to our clients, partners and employees; contributing to develop a sustainable community.

CORE VALUES

Every Newtecons staff member is happy to serve our distinguished clients with deep passion, professionalism, and enthusiasm.

INTEGRITY

Integrity is the guideline for every idea and every action of each Newtecons employee.

UNITY

The strength of unity brings all staff together, heading toward mutual success.

KINDNESS

Be kind to peers, be kind to the company, be kind to our clients & partners, be kind to family and society, be kind to self.

OPTIMIZATION

Always proactively improve and offer solutions to operate work efficiently, deliver expert construction to clients, meeting technical - aesthetic standards, optimizing time and cost.

CREATIVITY

Constantly create and update the latest technologies so that the next project is always better than the last.

CORPORATE SOCIAL RESPONSIBILITY

Sustainable development is a key focus of Newtecons' development strategy, as reflected throughout the process from vision planning, preparation to operation. As a result, all leaders from Divisions and Departments, along with all employees always comply with sustainable development activities. Newtecons' social responsibility focuses on the following main activities:

NEWSHARE FUND

Inspired by the traditional sense of solidarity, the Newshare Fund was established to support Newtecons employees in difficult circumstances. The Foundation operates on the basis of Publicity - Transparency - Voluntariness - Non-profit. This is not only an act of sharing, but it also brings encouragement and increases team bond, compassion and solidarity.

Apart from supporting programs for employees, in the future, Newshare Fund will expand its reach to more voluntary social activities and help vulnerable people in society.



NURTURING TALENT

Newtecons has signed cooperation agreements with many universities, including universities specializing in design & construction such as Ho Chi Minh City University of Technology and Ho Chi Minh City University of Architecture. Newtecons also implements Newtecons Internship programs; Newtecons Ideas - a fund for research and innovation; accompanying

the Youth Union - Newtecons Student's Association, and Experience with Newtecons - Externship, etc. These activities aim to prepare future human resources of the construction industry with practical knowledge and experience, and cultivate tomorrow's talent and a love for the profession, nurturing potential superstars of the future.

SHARING WITH THE COMMUNITY

As part of social responsibility activities, Newtecons regularly engages in relief activities, charity activities to support local communities and provide basic necessities and school supplies to those in need. This comes from the heart and responsibility of all the company staff and other philanthropists, fulfilling the traditional sense of solidarity.



GREEN CONSTRUCTION

Green materials

We choose smart and eco-friendly products, unburnt materials and work with suppliers to increase the amount of recycled materials in our products.

Green energy

At construction sites, we develop detailed construction plans to optimize coordination between divisions; equip ourselves with advanced machinery and technology to improve productivity and simultaneously minimize material loss and save energy.

Waste processing

At construction sites and offices, we have designed and applied water-saving solutions and maximize the use of natural water sources. Sewage from the construction is properly processed before being discharged into the city's system to protect the environment. All waste from construction activities is collected, sorted and processed according to environmental standards by certified third parties.



