



# SYMBOL

## OF EXCELLENCE

With the utmost enthusiasm and spirit of constant innovation, Newtecons is noted as a leader in the construction industry throughout Vietnam and the region. Newtecons represents **superior values** to Clients, proven by remarkable projects delivered over time; a **trusted contractor** for winning and delivering many successful domestic and foreign investors developments; and a **symbol of future** where the Newtecons team sow kindness to reap sustainable development, and pioneer new techniques to conquer new pinnacles in construction.

## SYMBOL OF VALUE

Symbol of Value description	03
Key reference projects	05
Message from Chairman of the Board	13

## SYMBOL OF TRUST

Symbol of Trust description	15
The journey of establishing credibility	17
Board of Directors	19
United and dedicated team	25
Outstanding ability, unwavering commitment	29
Key achievements	53

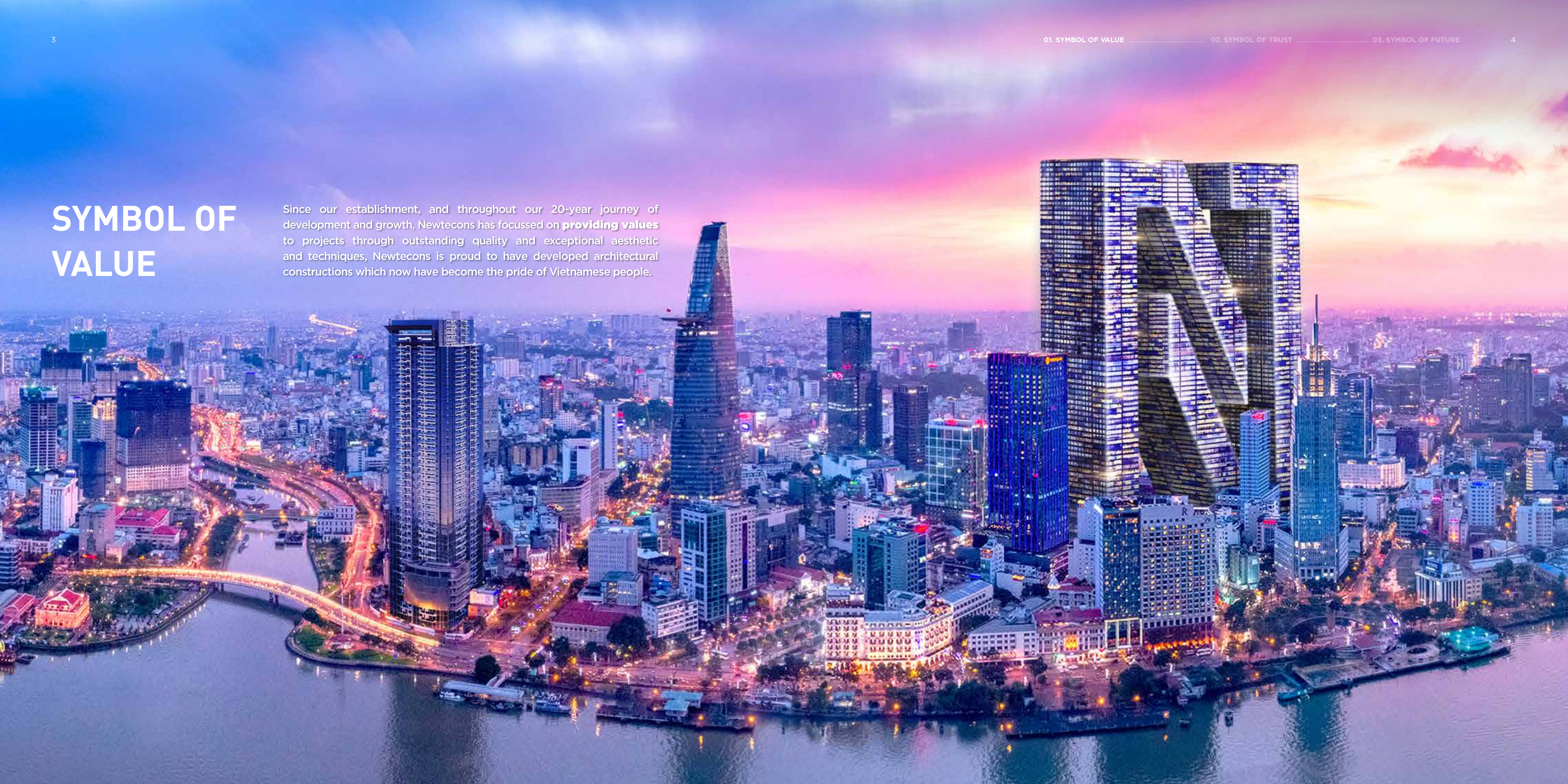
## SYMBOL OF FUTURE

Symbol of Future description	101
Our Vision - Mission - Core values	103
Corporate social responsibility	105



# SYMBOL OF VALUE

Since our establishment, and throughout our 20-year journey of development and growth, Newtecons has focussed on **providing values** to projects through outstanding quality and exceptional aesthetic and techniques, Newtecons is proud to have developed architectural constructions which now have become the pride of Vietnamese people.





## KEY REFERENCE PROJECTS

# LONG THANH INTERNATIONAL AIRPORT

Long Thanh International Airport is a major national transport infrastructure project that has significant implications for the growth of the aviation industry in particular, the socioeconomic development of the southern key economic region, and Vietnam in general. Its design is inspired by the image of a stylized lotus flower, representing a strong will to succeed and aspirations.

**Employer**  
**Airports Corporation of Vietnam (ACV)**

**Type of project**  
**Construction and installation of passenger terminal building**

**Role**  
**Contractor of VIETUR Joint Venture**

**Scale**  
**5,000 ha**

**Construction Duration**  
**39 months**



## KEY REFERENCE PROJECTS

# GRAND MARINA SAIGON

Grand Marina, Saigon is a large-scale complex with diverse functions ranging from luxury apartments to offices and commerce. Developed by Masterise Homes Group and world-class hotel brand Marriott International, the project is truly accomplished the mission of being a mega project situated at the Saigon's most sought-after location.

Employer  
**Masterise Homes Real Estate Development Co., Ltd**

Type of project  
**Luxury apartments, offices, commercial centers**

Role  
**Design & Build General Contractor**

Scale  
**5 basements and 3 towers, 47 floors each tower**

Construction Duration  
**40 months**





## KEY REFERENCE PROJECTS

# ONE CENTRAL HCM

Newtecons is proud to deliver luxury mixed use projects, including a 6-star branded apartment complex, located in the heart of Saigon. With a unique design of the emblematic Asian dragon holding a gem, One Central HCM is fast becoming an architectural highlight in the city, and is likely to be a landmark development on the Ho Chi Minh City skyline in the future.

Employer  
**Saigon Glory Limited Liability Company**

Type of project  
**Apartment, Office, Commercial area**

Role  
**General contractor**

Scale  
**6 basements, 10 podiums, 46 storeys**

Construction Duration  
**30 months**





## KEY REFERENCE PROJECTS

# FULBRIGHT UNIVERSITY VIETNAM



Fulbright University Vietnam (FUV) is invested by 100% foreign capital. Under the sponsorship of the US Government, FUV operates as an independent, not for profit entity, aiming to bring world-class education quality to Vietnamese students. The FUV new campus project is a bespoke new campus specially designed to serve the learning, teaching, training and research of thousands of domestic and international students. The FUV campus is designed around strong sustainability criteria, and shall be certified LEED Gold, LEED Neighbourhood and EDGE Platinum standards.

**Employer**  
**Fulbright University Vietnam Corporation**

**Type of project**  
**Education**

**Role**  
**Design and Build contractor**

**Scale**  
**150,000 m<sup>2</sup>**

**Construction Duration**  
**24 months**





Together, One vision, One direction, Newtecons is constantly growing, affirming our position as the leading construction general contractor in Vietnam, creating symbols of value, trust and future.



“Throughout two decades of establishment and development, Newtecons has faced many ups and downs, overcome countless challenges, and conquered various proud milestones to affirm its position as the leading general construction contractor in Vietnam today. Not only aiming for an impressive number of successful projects, we also relentlessly strive for business development as well as bringing values to partners, clients and the society, while creating a happy working environment for Newteconsers.

Being guided by our “Build on trust” philosophy, Newtecons has established a symbol of trust throughout Vietnam and abroad. Our projects are based on credibility and commitment with a view to providing clients and partners with the best benefits. Trust is identified as the guideline to all Newtecons activities, helping us conquer domestic and foreign investors, which has become a leverage for us to expand regionally and internationally.

Newtecons offers innovative solutions and optimal construction methods, meeting clients’ increasingly strict requirements,

and, in many cases exceeding international standards. Newtecons’ achievements have gone beyond the limits of a mere contractor, becoming a symbol of dignity, pride and value.

With compassion at their core, Newtecons has attracted and developed highly-qualified, dedicated, devoted, united, and like-minded team. We care not only for our employees, but their family as well, just as we care for our clients and partners. It is with this kindness that Newtecons leads the way and sets higher goals for the creation of green buildings and refines our activities to contribute to the highest values to our communities and societies, and to share this success and vision with the future generations.

Newtecons remains dedicated to our business philosophy of “Credibility - Professionalism - Kindness”, and through this, Newtecons has unraveled a new journey, turning potential into prosperity, abundance and success, and continuing the growth of Newtecons as a symbol of value, trust and future.”

**Mr. TRAN KIM LONG**  
Chairman of the Board





# SYMBOL OF TRUST

“Build on Trust” is always displayed next to the Newtecons brand because we believe that our credibility is a measure of the growth and sustainability of an enterprise in the construction industry. It is built around sincerity, integrity, dedication and effort of Newtecons people that have instilled a **symbol of trust** in the minds of clients, partners and the community.

CREDIBILITY KINDNESS  
PROFESSIONALISM



## THE JOURNEY OF ESTABLISHING

# CREDIBILITY

**2003**

Established F.D.C. Real Estate Investment Construction Joint Stock Company.

**2009**

Participated in the construction of the premium apartment complex – Indochina Plaza Hanoi commercial and service center, which won 5 honorable regional awards for interior design and architecture.

**2011**

Established Waterproofing division, specializing in constructing and providing waterproofing products and solutions for constructions. Waterproofing division, a part of F.D.C, is the partner of multiple major contractors across the country.

**2012**

Marked a significant growth of F.D.C when investors selected F.D.C as the General Contractor for key projects: Phu My 3, Texhong Ngan Long Factory, Jotun Factory, etc.

**2013**

Established Aluminium and Glass division, and developed the brand through many major projects: Vinhomes Central Park III, Regina Hai Phong factory, Big C Ha Long, etc.

**2015**

Participated in the construction of CT5 Masteri Thao Dien tower, reached project sales of 1,000 billion.

**2016**

Participated in the construction of the “mega-project”, Landmark 81 - the tallest building in Vietnam. F.D.C was responsible for the elevator core and steel structure, which required the highest expert techniques of Landmark 81 project.

**2017**

Listed in Top 10 Prestigious construction contractors and Top 500 Fastest growing enterprises in Vietnam.

**2018**

Continued to be listed in Top 10 Prestigious construction contractors and Top 500 Fastest growing enterprises in Vietnam; received a Certificate of Merit from the Ministry of Labor, War Invalids & Social Welfare for achievements in occupational safety and health for 3 consecutive years.

**2019 - 2020**

Changed name to NEWTECONS Construction Investment Joint Stock Company. Honored in Top 50 Fastest growing enterprises in Vietnam, and one of best companies to work for in Asia (HR Asia Awards)

**2021**

Listed in Top 10 Prestigious construction contractors and Top 50 Fastest growing enterprises in Vietnam. Newtecons inaugurated the Newtecons Tower, marking a proud milestone in the process of expansion across the globe.

**2022**

Outstanding growth with revenue of over VND 10,000 billion and recognition as one of Vietnam's Top 5 Prestigious construction contractors.





# BOARD OF DIRECTORS

---







**Mr. VO THANH LIEM**  
General Director

Mr. Vo Thanh Liem, with more than 22 years of experience, has held various key positions in Vietnamese top construction enterprises. He officially becomes the General Director of Newtecons since June, 2022.

As a person with a lively, enthusiastic and fierce personality, as well as the ability to expand relationships, connect with major domestic and foreign investors, he is trusted to take the lead and help Newtecons affirm its position as the leading Construction General Contractor in Vietnam.

**Mr. NGUYEN QUANG THUY**  
Operations Director

Mr. Nguyen Quang Thuy has over 25 years of experience in the construction industry. As a member of the company since its establishment, he has contributed to the creation of management systems at construction sites, and trained many generations of competent managers, supervisors, and engineers for Newtecons.

With remarkable expertise, technique and extensive management experience, along with the ability to quickly rally human resources, he has given rise to successful projects throughout the history of Newtecons brand establishment, making it as strong as it is today.



**Mr. HOANG PHUONG LAM**  
Operations Director

Mr. Hoang Phuong Lam, a graduate from the National University of Civil Engineering with more than 22 years of experience, has become known today as an excellent manager with credible expertise and sharp thinking. He has inspired many generations of Newtecons employees with his logical and organized working style.

Having a thorough understanding of the market, together with logical and meticulous management capacity, he has successfully brought many projects to the finish line, paving the way for the development of Newtecons over the past few years.

**Mr. LE DUC BUU**  
Operations Director

Mr. Le Duc Buu has been entrusted with the responsibility of a Operations Director at Newtecons since early 2021. Mr. Buu has over 17 years of working in the construction industry and held many important positions at leading construction companies in Vietnam.

With a wealth of experience and diligence in his profession, Mr. Buu has conquered projects after projects, from ones requiring refined aesthetics, to larger ones demanding special quality in a short span of time.

He is a young, enthusiastic, highly disciplined leader who pays close attention to his colleagues and focuses on team training, building and bonding activities.





**Mr. NGUYEN TRUONG DUY**  
Operations Director

Mr. Nguyen Truong Duy is a serene manager, meticulous in work and perceptive in management. The projects of which he is in charge always acquire outstanding quality and receive high satisfaction from the Employers.

As a young leader with early exposure to advanced technology from developed countries, he regularly undertakes foreign projects, and industrial projects requiring strict technical skills.

In addition to professional activities, he also takes part in training the next generation of Newtecons to prepare them with methodical management skills and structured thinking, to build a more and more thriving Newtecons.



**Mrs. HA TIEU ANH**  
Finance Director

Mrs. Ha Tieu Anh, with over 25 years of experience in financial management at Vietnamese top construction corporations, has established a stable and explicit financial system for Newtecons with her expertise and methodical management.

With her sophistication, flexibility as well as determination, Mrs. Anh has inspired and guided the office staff to solidarity and collective strength, to become a reliable backing force, assisting the Construction Division in achieving fruitful results.

**Mr. DO NGUYEN THANH NHAN**  
Operations Director

Mr. Do Nguyen Thanh Nhan has more than 20 years holding many important positions in both construction sites and office at leading construction corporations in Vietnam. Today, Mr. Nhan has made many marks in his career, especially his contributions at Newtecons.

A person with a professional approach and a sincere, warm demeanor - that's the impression of Mr. Nhan through the eyes of his colleagues.



**Mr. NGO DINH NGOC QUANG**  
Operations Director

Mr. Ngo Dinh Ngoc Quang has left his mark in many iconic projects across the country such as Landmark 81, Dai Quang Minh Urban Area, Diamond Island II, Hilton Saigon,... after over 20 years in the construction industry in Vietnam.

Known for his calm, meticulous nature, highly specialized skills, passion, and a positive attitude, he has won not only the trust of clients and partners, but also the heart of colleagues and employees.





# UNITED AND DEDICATED TEAM

Newtecons is currently one of the enterprises with the best working environment and welfare program in the construction industry. Newtecons has been recognised by the HR Asia Awards as one of **the best working environments in Asia** for many consecutive years. Each officer, each employee always considers that mutual success of Newtecons is the career and legacy of a lifetime, thereby developing their attachment and eagerness to learn while demonstrating their capabilities.





# WORKING ENVIRONMENT

**TRANSPARENCY  
EQUITY**

We understand that it is imperative to ensure transparency-equity from evaluating performance and capacity to building a development roadmap, as well as applying organizational policies, so as to guarantee that all members of the company are equal, bringing benefits to employees and to the company as a whole.

**COOPERATION  
SINCERITY**

We aim for mutual understanding through direct and sincere conversations. Leaders are always willing to listen and give guidance to employees; peers are willing to share and support; and employees have confidence in each other, are open and willing to learn from each other to accomplish mutual goals.

**YOUTH  
ENTHUSIASM**

With our team of young professionals, the working environment at Newtecons is always full of energy, innovation, and courage to put thoughts into action, and employees sparing no effort in work as well as other activities.

**PROFESSIONALISM  
CREATIVITY**

Newtecons provides the best conditions for employees to work from modern equipment, spacious workplace to safe and clean environment. The open working space maximizes creativity, allowing employees to further innovate themselves and adapt to today's ever advancing development.



# PRACTICAL WELFARE, WORTHY TREATMENT

Recognizing and appreciating each employee's contribution, Newtecons always updates and strictly abides by the current regulations of the government. Salary and bonus policy is guaranteed to be timely, appropriate and flexible in favor of employees.

We particularly care about both physical and mental health of all employees by applying various welfare policies: annual health check, comprehensive health care insurance, travelling packages, etc.

For those who work at remote projects, we provide travel allowance, paid leaves, accommodation assistance and offer daily meals to ensure employees' comfort and good health.

Newtecons also organizes comprehensive training through internal training or sending employees to study and research at domestic and foreign schools, institutions and centers; coupled with sustainable and suitable promotion paths.

Newtecons is constantly developing, improving and supplementing our welfare programs and remuneration policies for the better, with Newtecons becoming the "second family" for many employees, developing a culture where all can contribute and develop to achieve together.





# OUTSTANDING ABILITY, UNWAVERING COMMITMENT



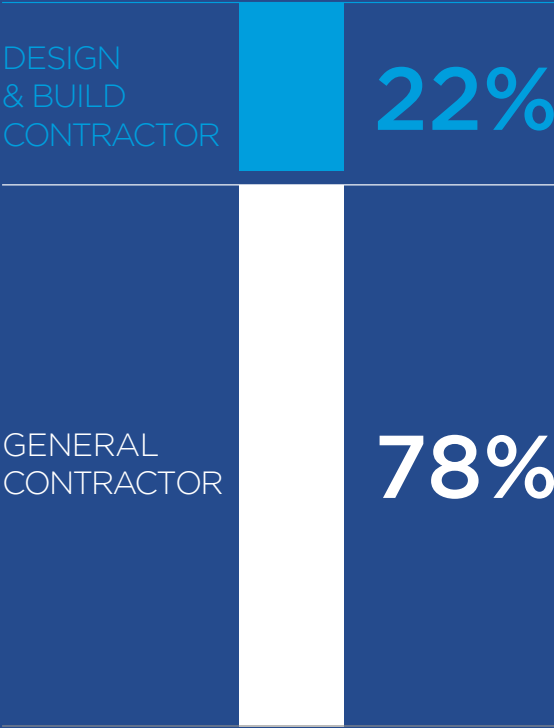
## TYPE OF PROJECT

63%  
RESIDENTIAL

35%  
INDUSTRIAL

2%  
INFRASTRUCTURE

## ROLE IN PROJECT

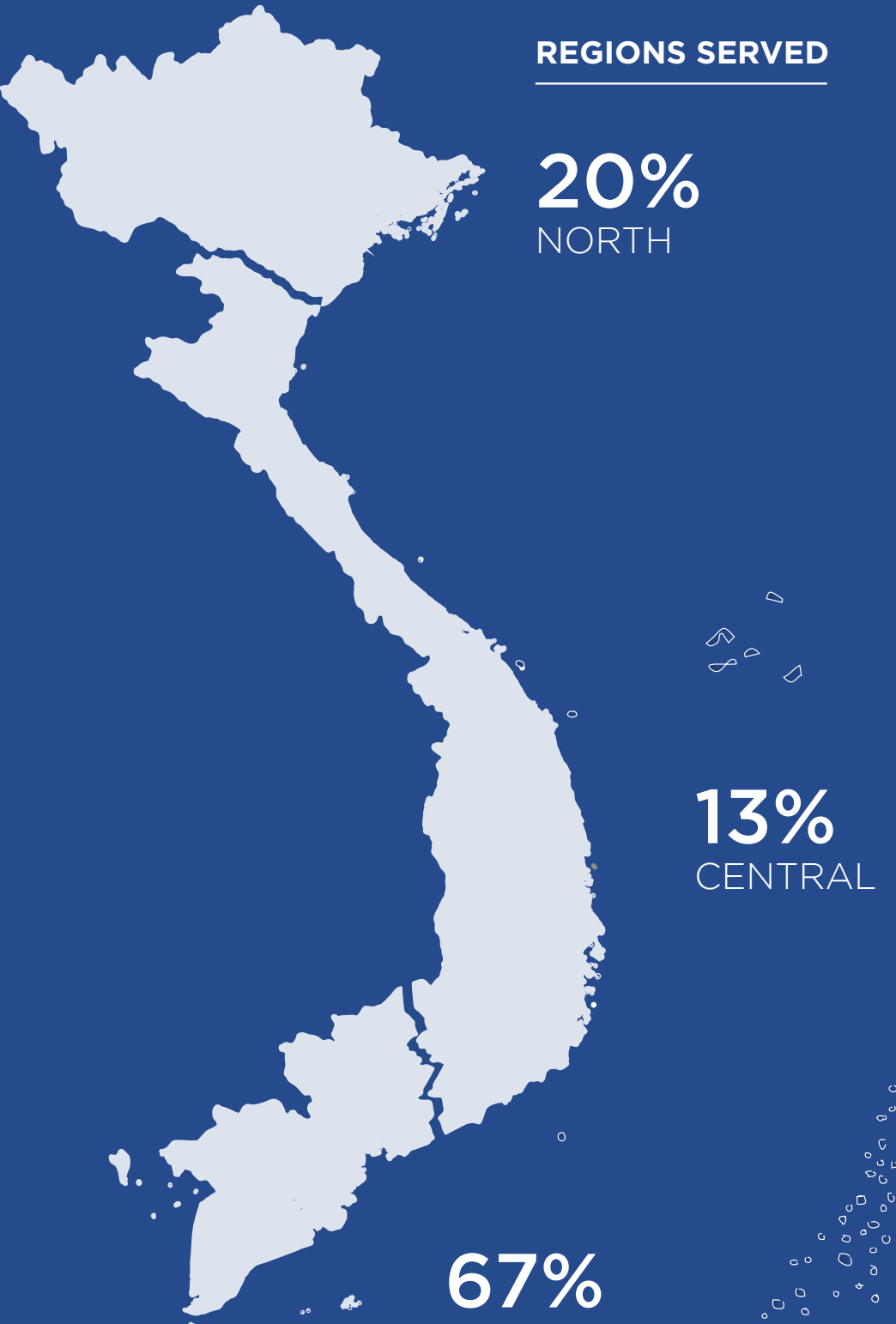


## REGIONS SERVED

20%  
NORTH

13%  
CENTRAL

67%  
SOUTH





# FIELDS OF OPERATION

## DESIGN AND BUILD

Design and Build (D&B) is an advanced development model that has been applied by many renowned contractors around the world. This model optimizes efficiency by combining the tasks of designing and building into one, shortening the construction time while saving costs and human resources. However, the D&B model is not easily executed, especially when applied to large-scale and complex projects. Therefore, the developer's biggest concern is the ability and capacity in both design and construction.

Aside from being a member of Vietnam Green Building Council, Newtecons also has extensive experience in designing and building for various projects meeting Green Standards (LEED - USA), LOTUS (Vietnam), EDGE (UK/IFC).

Newtecons guarantees to offer our developers and investors a meticulously designed plan, integrating the optimal construction methodology in one service. This is accompanied with superior construction techniques and methods, can save up to 30% of project implementation time (including design, license and construction) and 10-15% of the cost, as described below:





## GENERAL CONTRACTOR

With excellent knowledge, experience and capacity in the field of construction and a comprehensive management system, Newtecons is becoming a guarantee of credibility and quality for a variety of large-scale projects.

As the General contractor, Newtecons undertakes all tasks from foundation work, basement and main structure, to finishing touches and landscape infrastructure. We emphasize the importance of consulting to not only provide the employers with in-depth and comprehensive solutions, but also propose optimal techniques, construction methods, and materials sources.

With a streamlined management model, Newtecons satisfies even the most challenging demands of the employers, while strictly complying with all regulations of occupational safety and health.





# CONSTRUCTION METHODS

Newtecons applies various latest techniques and most advanced construction methods, from deep basements to special structures such as:

- Topdown and semi-topdown construction
- Transfer beams
- High-rise floors
- Mass concrete
- Sky scrapper





BASEMENT CONSTRUCTION

The construction of underground works in tightly packed urban areas are always tricky and require a safety strategy for the construction area itself, as well as the surrounding properties.

Newtecons’ team of experienced experts, consultants and highly-skilled engineers have carried out the construction of multiple underground works with outstanding quality, satisfying the most demanding customers in the most challenging of conditions. Hundreds of deep basements projects across the country are being carried out by Newtecons’ utilising various methods, including: topdown, semi-topdown, open cut excavation, circular excavation without bracing system.



Basement construction at M-Garden City Da Nang



Basement construction at Techcombank Saigon Tower



Basement construction at Wink Hotel Saigon Centre





## STRUCTURAL CONSTRUCTION

Structural work - the backbone of any project, plays a particularly important role to deploy the next steps.

With the requirements of quality, progress and safety, Newtecons has established, and strictly follows our processes from planning and design, construction, safety and risk management. We are also pioneers in investing in the most modern structural construction equipment and technology, namely climbing formworks (jump forms, gang forms), sliding cover system, assembling reinforced concrete structures, reinforced cage frames, columns and partition walls, etc.

We have also constantly improved other special construction methods, such as transfer floor beams, atrium with heavy-duty scaffolding systems, mass concrete with cooling pipes, column shortening to complete the complex structures with the best quality, ensuring the safety of neighboring works.

Through scientific reports published in renowned journals, Newtecons has received recognition from noted academia and journals for our intensive knowledge and capability in this field.

*Structural construction at Lake Tower*



## CONSTRUCTION COMPLETION

Newtecons is precise and meticulous in the process of project completion to ensure a satisfying experience to our employers and clients. Our team of architects, engineers and skilled workers always perform a thorough process of preparations, and strictly follow technical checklists and aesthetic requirements. We focus on research and application of new materials to keep up with world trends while ensuring quality given domestic climate conditions allowing us to increase values for employers and promote a more efficient project.

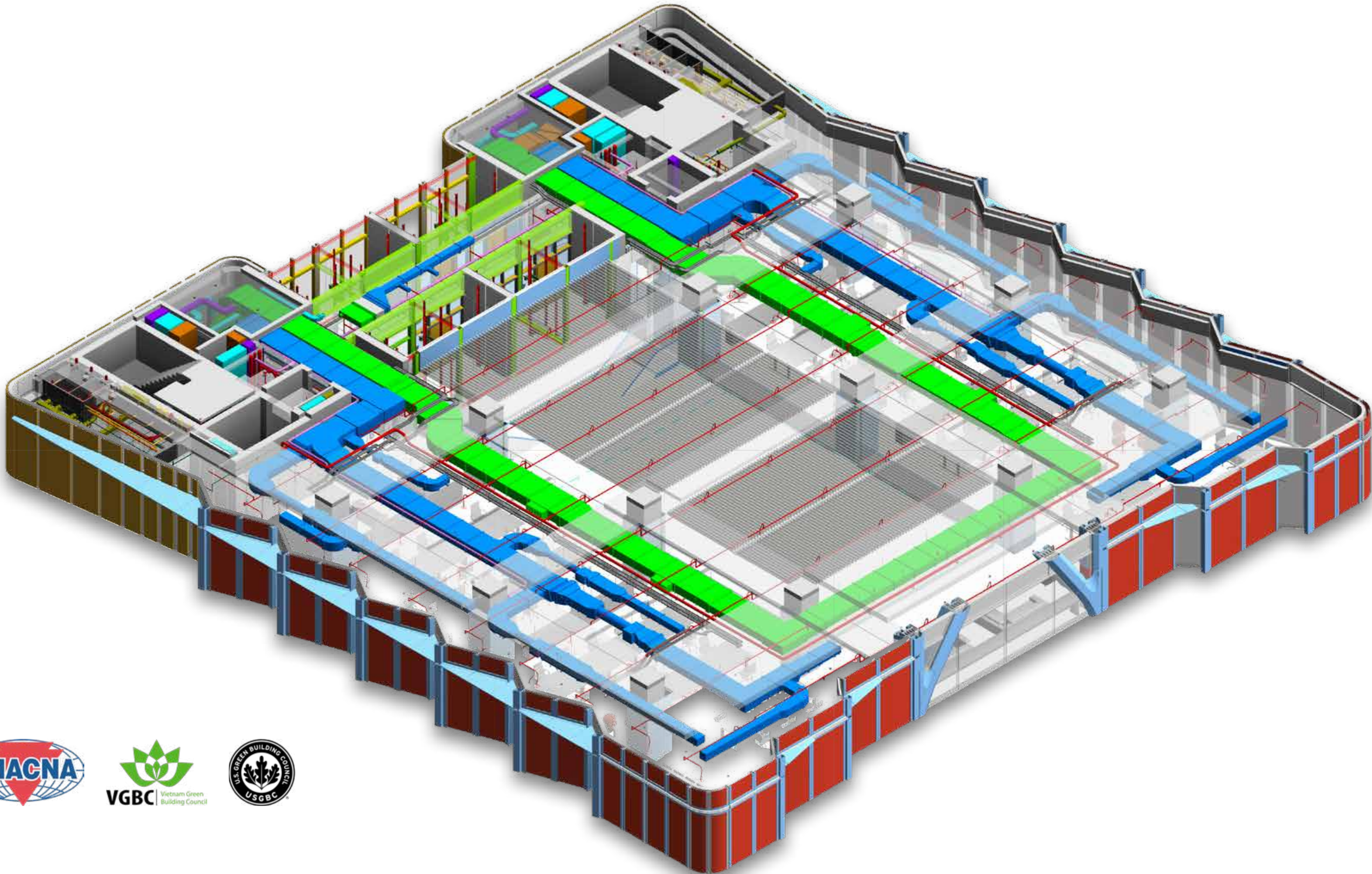
Our belief that each project and client's success is a reflection of our credibility, Newtecons' Board of Directors is particularly focussed on internal training for engineers, architects and workers to improve their skills throughout each project.





MEPF CONSTRUCTION

Outstanding ability in the design and installation of M&E systems for civil and industrial projects is possessed by Newtecons. Our group of skilled and knowledgeable engineers is constantly prepared to offer investors the most optimized, suitable, and secure solutions. The M&E Division consistently updates and implements the most recent industry standards, including IEC, NFPA, UL/FM, SMACNA, and LEED, in keeping with its philosophy of “always learning and improving.” Newtecons has been a contractor for major projects such Long Thanh International Airport; Grand Marina, Saigon; Schaeffler Vietnam factory; and Flamingo Dai Lai Resort, having been selected and trusted by the investor.









## IMPROVEMENTS FOR SIGNIFICANT EFFICIENCY

---





EQUIPMENT

Apart from being equipped with tower cranes, hoists, aluminium formwork, scaffolding, ringlock and covering grid, etc., in order to ensure safety, progress - productivity and savings during construction, Newtecons is constantly improving and investing in advanced equipment, including inner-climbing tower crane, large cage hoist, sliding formwork .

In order to facilitate the rapid deployment of equipment and materials, Newtecons has three key large-scale storage facilities located throughout Vietnam: Hanoi, Da Nang, Ho Chi Minh City. These locations ensure that additional or replacement equipment is never far away and time lost remains at a minimum.

Core-climbing/floor climbing tower cranes

Conventional solutions such as outdoor vertical cranes often involve a large number of bodies, cuffs, braces, and consume significant transportation costs. Newtecons has boldly utilized floor climbing and inner-climbing tower cranes to diversify construction options and save costs for developers and investors. The tower crane inserted into the floor core for construction has the following advantages:

- Increase capacity and the load range of tower cranes is greater than outdoor vertical cranes.
- Reduce the cost of employing and transporting the body, cuffs, braces.
- Operate safely, especially in the stormy season. Our natural disaster prevention measures are simple but cost effective.

Automatic sliding formwork

To overcome the disadvantages of construction when the weather is not favorable and ensure safety, Newtecons has applied an automatic sliding coffa system with hydraulic jacks, completely independent of tower cranes. Automatic coffa reduces operating risks, improves controllability and quality of concrete surface after pouring.

Aluminum monolithic formwork system for columns, partition walls, dividing walls

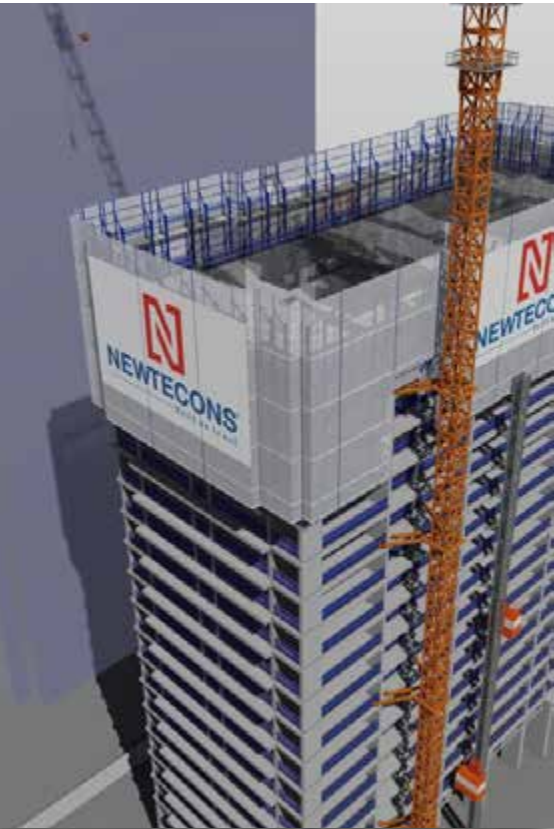
Compared to the conventional panelled wood cofa, it is an efficient construction alternative. The strength of complete block construction (columns, walls, beams, floors, and partitions), a straightforward support system, and an open construction site is to provide beautiful concrete surface and shorten construction time.

Large cage hoist

Alimak, a hoist company from Sweden, is renowned for its safety, efficiency and top quality in the world. All Alimak hoists used for Newtecons' projects are satisfied the strict standards of Europe and the G7. Furthermore, at Newtecons' projects, we also upgraded an Alimak Model SC65 hoist with a 3.5m cage into a 4.2m cage and vice versa, which helps to boost productivity and customizability in transporting materials, especially large structures, meeting every specific requirement of the project.

Gang form system

Gang form construction technology is currently applied widely around the world because of its exceptional advantages. The entire gang form system combined with aluminum formwork and safety nets wraps around the perimeter of the building within 3 floors instead of the conventional scaffolding system and covering grid to ensure management quality and occupational safety. One of the key benefits of gang form technology is that deviations in the floor areas are minimized, as the aluminum formwork system helps smooth the surface, shortening the completion progress. As a monolithic concrete construction technology (with simultaneous construction of floors, partitions and boundary walls), the gang form system saves human resources, pushes construction progress, reduces the quantity and operation of forms, floor beams, particularly suitable for high-rise buildings.





TECHNOLOGY

Throughout our design, estimating, construction and procurement teams, Newtecons employs specialized software, BIM software (Building Information Modelling) to refine the design, identify conflicts, reduce waste and the need to redesign, estimate quantities and cost, and schedule projects. BIM is particularly beneficial when “Just In Time” deliveries are needed on constricted construction sites. The results of this are optimizing design, the saving of time, increased accuracy in design and a minimisation of costs throughout every stage of the project.

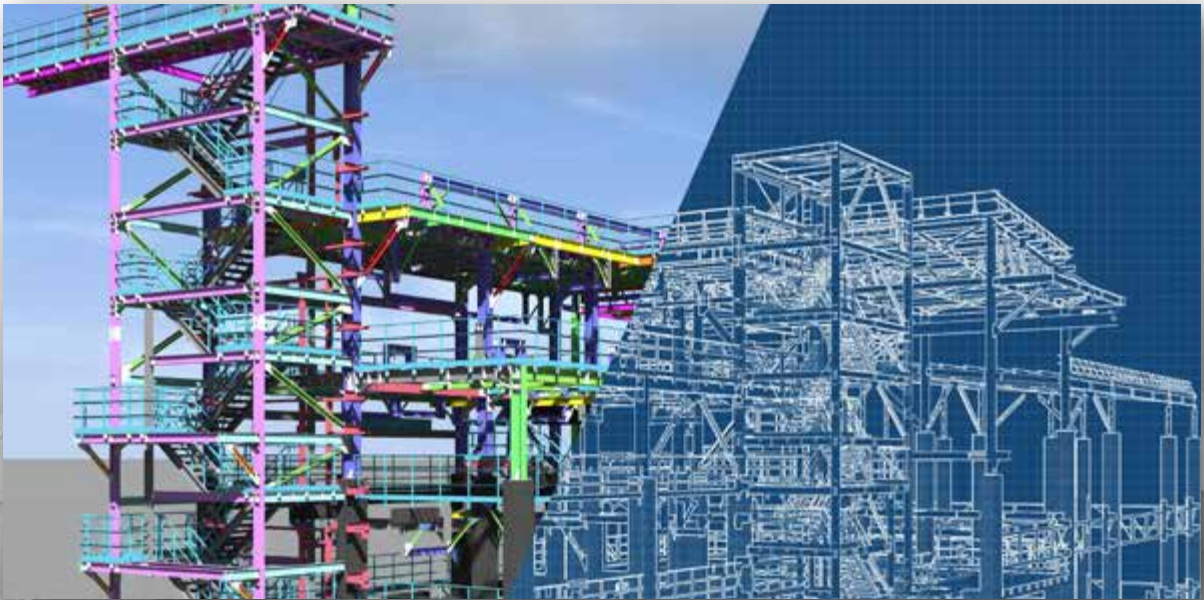
BIM application

We apply BIM in our design process and Revit 3D in construction. Implementing this system in the initial project stages allows careful application and implementation from design to material selection to minimize potential risks throughout the design phase, which will have an impact on the eventual construction works. Newtecons’ team also apply Virtual Reality (VR) in typical projects, providing customers with visual interactive experiences, the ability to interact with their projects prior to completion, and even rearranging the layout if required.



Quantity take-offs application

This allows optimizing costs for investors while strictly controlling the progress of the project. Applying 3D technology and 4.0 techniques to production and business operations helps optimize the process as fast and efficiently as possible.



CERTIFICATIONS

Newtecons has been certified ISO 9001:2015 by the international organization QMS since 2017. Ever since, Newtecons has established and operated a management system, ensuring stable quality of products and services, enhancing general quality, meeting higher needs of clients, thereby increasing the competitive edge of the enterprise and partners.

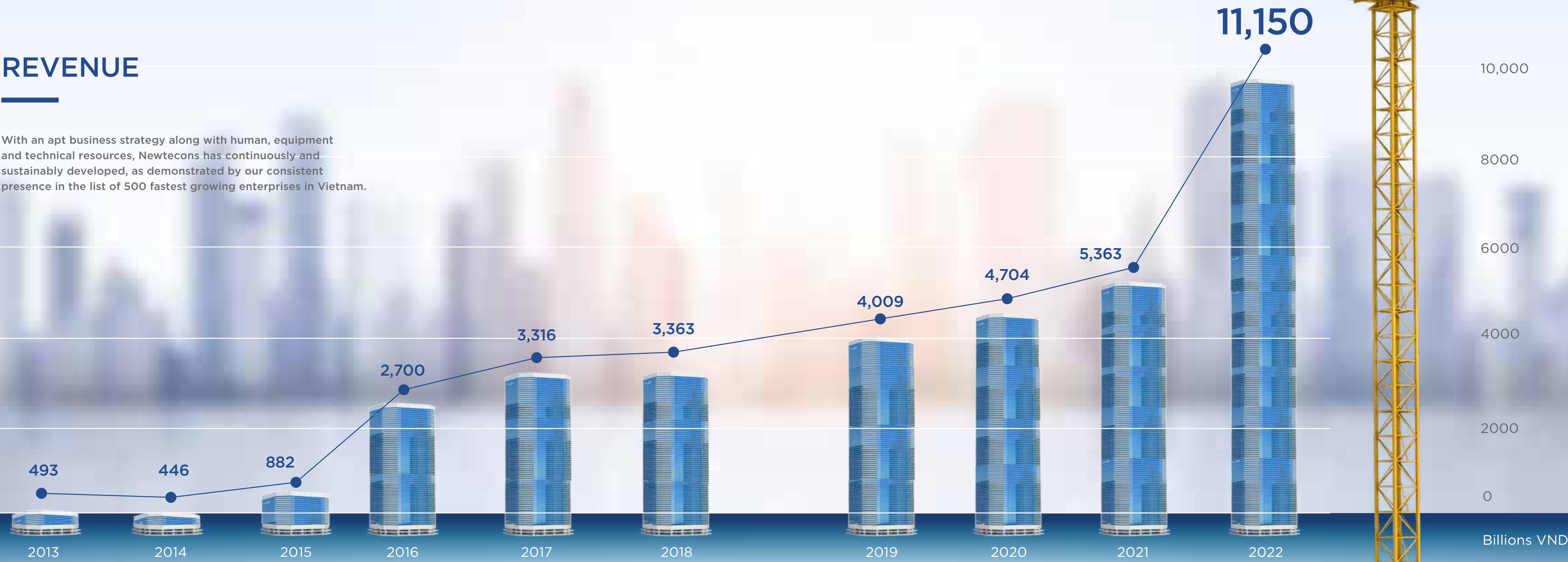




# KEY ACHIEVEMENTS

## REVENUE

With an apt business strategy along with human, equipment and technical resources, Newtecons has continuously and sustainably developed, as demonstrated by our consistent presence in the list of 500 fastest growing enterprises in Vietnam.





# OUR CLIENTS





## SELECTED PROJECTS

Along the path of our development, Newtecons has successfully accomplished both domestic and foreign developments and participated in the creation of hundreds of projects across Vietnam. Through our credibility and quality, Newtecons has won over many demanding international clients such as Japan, USA, Germany, etc.





## Residential projects





# GRAND MARINA, SAIGON

Employer  
Masterise Homes Real Estate  
Development Company Limited

Role  
Design and Build contractor

Scale  
5 basements, 3 towers, 47 storeys

Construction Duration  
23 months



# FLORA MIZUKI MP6-7-8

Employer  
NNH Mizuki Joint Stock Company

Role  
General contractor

Scale  
3 towers, 20 storeys

Construction Duration  
19 months



# ASIANA DA NANG

Employer  
Gotec Land Group Joint Stock  
Corporation

Role  
General contractor

Scale  
3 basements, 34 storeys

Construction Duration  
27 months (estimated time)



# LUMIÈRE RIVERSIDE

Employer  
Parkland Residential and Commercial  
Complex Co., Ltd

Role  
General contractor

Scale  
PL52: 2 basements, 38 storeys - PL53:  
2 basements, 45 storeys

Construction Duration  
29 months (estimated time)





# THE SÓNG

Employer  
An Gia Real Estate Group Joint Stock Company

Role  
Design and Build contractor

Scale  
2 basements, 37 storeys

Construction Duration  
29 Months



# MASTERI WATERFRONT

Employer  
Minh Tan Ha Noi Real Estate Company Limited

Role  
Design and Build contractor

Scale  
1 basement, 6 towers, including 2 towers with 26 storeys, 2 towers with 27 storeys, 1 tower with 30 storeys, 1 tower with 38 storeys

Construction Duration  
25 months (estimated time)



# THE NINE

Employer  
G.P Invest

Role  
General contractor

Scale  
3 basements, 31 storeys

Construction Duration  
17 months (estimated time)





# PHUONG VIET II

Employer  
Phuong Viet Investment and Real Estate Business Corporation

Role  
General contractor

Scale  
01 basement, 28 storeys

Construction Duration  
18 months (estimated time)



# MASTERI THAO DIEN - CT5

Employer  
Thao Dien Investment Company Limited

Role  
Design and Build contractor

Scale  
1 basement, 45 storeys

Construction Duration  
26 Months



# SORA GARDENS II

Employer  
BTMJR Investment Limited Company - Becamex Tokyu

Role  
General contractor

Scale  
2 towers, 25 storeys

Construction Duration  
24 months



# T&T CITY MILLENNIA

Employer  
T&T Group

Role  
General contractor

Scale  
1,700 villas

Construction Duration  
25 months





# VINHOMES SMART CITY

Employer  
Vinhomes Joint Stock Company

Role  
General contractor

Scale  
2 towers, with 34 storeys and 35 storeys

Construction Duration  
12 months



# VINHOMES OCEAN PARK

Employer  
Vinhomes Joint Stock Company

Role  
General contractor

Scale  
1 basement, 2 towers with 26 storeys and 27 storeys

Construction Duration  
19 months



# BERRIVER PREMIER

Employer  
Developer: Masterise Homes

Role  
Design and Build contractor

Scale  
3 basements, 25 storeys

Construction Duration  
22 months





# VINHOMES GOLDEN RIVER - AQUA 2

Employer  
Vinhomes Joint Stock Company

Role  
Subcontractor

Scale  
3 basements, 50 storeys

Construction Duration  
18 months



# D'.CAPITALE

Employer  
Blue Star & Vingroup Joint Stock Company

Role  
Main contractor

Scale  
3 basements, 43 storeys

Construction Duration  
41 months



# GRAND BAY HALONG COMPLEX

Employer  
BIMLand

Role  
General contractor

Scale  
15 villas

Construction Duration  
12 months



# FLORA MP9-MPX & FLORA PANORAMA

Employer  
Nam Long Group

Role  
General contractor

Scale  
3 blocks with more than 400 apartments

Construction Duration  
16 months





## NEWTECONS TOWER

Employer  
DTL Investment and Development Joint  
Stock Company

Role  
Design and Build contractor

Scale  
4 basements, 18 storeys

Construction Duration  
19 months



## TECHCOMBANK SAIGON TOWER

Employer  
Vietnam Technological and Commercial  
Joint Stock Bank (Techcombank)

Role  
General contractor

Scale  
5 basements, 22 storeys

Construction Duration  
16 months (estimated time)





# CADIVI TOWER

Employer  
Vietnam Electric Cable  
Corporation - CADIVI

Role  
General contractor

Scale  
4 basements, 13 storeys

Construction Duration  
16 months



# ONE HUB SAIGON

Employer  
Ascendas Saigon Bund Company Limited

Role  
General contractor

Scale  
1 basement, 7 storeys

Construction Duration  
10 months



# WINK HOTEL SAIGON CENTRE

Employer  
Indochina Capital Corporation

Role  
General contractor

Scale  
2 basements, 12 storeys

Construction Duration  
13 months



# HA NOI ADELAIDE SCHOOL

Employer  
Geleximco Group Joint Stock Company

Role  
General contractor

Scale  
1 semi-basement, 4 storeys

Construction Duration  
8 months





# VAN LANG UNIVERSITY PHASE 4

Employer  
Van Lang University

Role  
Design and Build contractor

Scale  
43,000m², including 3 basements

Construction Duration  
20 months (estimated time)



# THE DEWEY SCHOOLS

Employer  
Gateway Viet Nam Education Joint  
Stock Company

Role  
General contractor

Scale  
1 basement, 5 storeys, BOH and landscape

Construction Duration  
10 months



# CENTRAL SERVICE, COMMERCIAL AND HOUSING AREA, CLUSTER 4, WARD 1, SA DEC CITY

Employer  
T&T Group

Role  
General contractor

Scale  
The Commercial and Service Area: 8,080 sqm  
the Townhouse Area: 1,807m²

Construction Duration  
21 months



# THE ROYAL DA NANG

Employer  
The Royal Danang Limited Company

Role  
General contractor

Scale  
1 block with 29 floors and 2 basements

Construction Duration  
14 months





# M - GARDEN CITY DA NANG

Employer  
M Group International Company Limited

Role  
General contractor

Scale  
3 basements, 28 storeys

Construction Duration  
18 months (estimated time)



# MINERA HOT SPRINGS BINH CHAU

Employer  
Saigon - Binh Chau Tourism Joint Stock Company

Role  
General contractor

Scale  
53,000 m²

Construction Duration  
31 months



# FLAMINGO DAI LAI RESORT

Employer  
Flamingo Dailai Resort Joint Stock Company

Role  
General contractor

Scale  
1 basement, 11 storeys, 172 villas

Construction Duration  
22 months



# MASTERI VILLAS

Employer  
Techcomdeveloper & Vingroup Joint Stock Company

Role  
Design and Build constructor

Scale  
184 luxury villas

Construction Duration  
10 months





# DAKMIL CENTER

Employer  
T&T Group

Role  
General contractor

Scale  
1 basement, 5 storeys, 4,545 m<sup>2</sup>

Construction Duration  
18 months



# SORA GARDENS SC

Employer  
Becamex Tokyu

Role  
General contractor

Scale  
19,863 m<sup>2</sup>

Construction Duration  
18 months



# T&T COMPLEX

Employer  
T&T Group

Role  
General contractor

Scale  
35,118 m<sup>2</sup>, 118 townhouses with 5 floors  
+ shophouse and 5 star hotel: 20 storeys

Construction Duration  
14 months



# PHUOC THO 1&2 RESIDENTIAL AREA

Employer  
T&T Group

Role  
General contractor

Scale  
11.5 ha

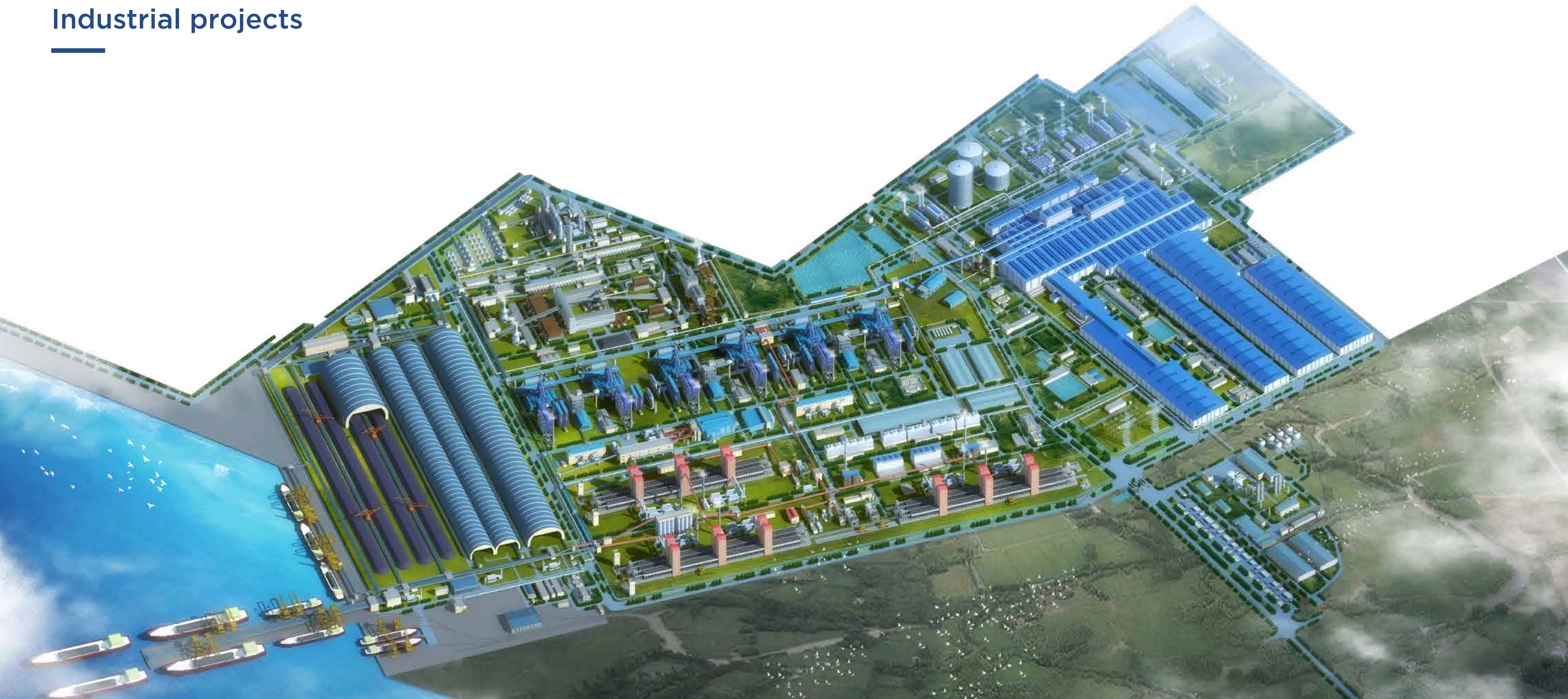
Construction Duration  
24 months





## Industrial projects

---





# BOHO DÉCOR FACTORY

Employer  
Boho Decor Company Limited

Scale  
40,100 m²

Role  
General contractor

Construction Duration  
11 months



# BM WINDOWS

Employer  
BM Windows Joint Stock Company

Scale  
15,000 m²

Role  
Design and Build contractor

Construction Duration  
5 months





# PAIHONG FACTORY

Employer  
Paihong Vietnam Company Limited

Role  
Design and Build contractor

Scale  
160,000 m<sup>2</sup>

Construction Duration  
22 months



# HO NAI - DONG NAI INDUSTRIAL PARK

Employer  
KCN Dong Nai Joint Stock Company

Role  
Design and Build contractor

Scale  
12,426 m<sup>2</sup>

Construction Duration  
Groundbreaking in June 2021



# HOA PHAT DUNG QUAT STEEL FACTORY

Employer  
Hoa Phat Group Joint Stock Company

Role  
Subcontractor

Scale  
167,800 m<sup>2</sup>

Construction Duration  
29 months



# MANWAH FACTORY

Employer  
Timberland Company Limited

Role  
General contractor

Scale  
133,000 m<sup>2</sup>

Construction Duration  
26 months





# KYOCERA FACTORY

Employer  
Kyocera Document Technology Vietnam  
Company Limited

Role  
Subcontractor

Scale  
116,200 m<sup>2</sup>

Construction Duration  
15 months



# BROTEX FACTORY

Employer  
Brotex Company Limited (Vietnam)

Role  
General contractor

Scale  
30,000 m<sup>2</sup>

Construction Duration  
12 months



# WEB-PRO FACTORY

Employer  
Design Web-Pro Company Limited  
(Vietnam)

Role  
Design and Build contractor

Scale  
50,000 m<sup>2</sup>

Construction Duration  
18 months



# VINFAST AUTOMOTIVE FACTORY

Employer  
Vingroup Joint Stock Company

Role  
General contractor

Scale  
50,500 m<sup>2</sup>

Construction Duration  
10 months





# BARETT SMART FACTORY

Employer  
Barett Craft Beer

Role  
Design and Build contractor

Scale  
44,057 m<sup>2</sup>

Construction Duration  
13 months



# VIET VUONG 3 FACTORY

Employer  
Viet Vuong Group

Role  
Design and Build contractor

Scale  
63,400 m<sup>2</sup>

Construction Duration  
12 months



# TECHTRONIC TOOLS (VIETNAM) COMPANY LIMITED – MANUFACTURING FACTORY CATEGORY

Employer  
TTI Group

Role  
D&B General contractor

Scale  
239,587 m<sup>2</sup>

Construction Duration  
12 months





# SCHAEFFLER VIETNAM FACTORY

Employer  
Schaeffler Vietnam Company Limited

Role  
General contractor

Scale  
50,000 m<sup>2</sup>

Construction Duration  
15 months



# WORLDON FACTORY

Employer  
Worldon (Vietnam) Company Limited

Role  
General contractor

Scale  
187,020 m<sup>2</sup>

Construction Duration  
21 months



# S-POWER FACTORY

Employer  
S-Power (Vietnam) Textile Company Limited

Role  
Design and Build contractor

Scale  
49,460 m<sup>2</sup>

Construction Duration  
21 months



# TBS WAREHOUSE 6

Employer  
Thai Binh Consultant and Construction Investment Joint Stock Company - TBS Group

Role  
General contractor

Scale  
51,000 m<sup>2</sup>

Construction Duration  
6 months





# QUOC QUANG FACTORY

Employer  
Guoguang Electric (Vietnam) Company Limited

Role  
Design and Build contractor

Scale  
40,000 m<sup>2</sup>

Construction Duration  
7 months



# LONG THAI TU FACTORY

Employer  
Tainan Textile Company Limited

Role  
General contractor

Scale  
36,700 m<sup>2</sup>

Construction Duration  
10 months



# PROJECT 08 - BW THOI HOA

Employer  
BW Industrial Development Joint Stock Company

Role  
General contractor

Scale  
102,000 m<sup>2</sup>

Construction Duration  
9 months



# TEXHONG NGAN LONG FACTORY

Employer  
Công ty TNHH Khoa học Kỹ thuật Texhong Ngân Long

Role  
General contractor

Scale  
50,000 m<sup>2</sup>

Construction Duration  
7 months





# PHAN VU FACTORY

Employer  
Phan Vu Quang Binh Concrete Company Limited

Role  
Design and Build contractor

Scale  
60,000 m<sup>2</sup>

Construction Duration  
6 months



39,587 m2

# GAIN LUCKY FACTORY PHASE 4

Employer  
Gain Lucky (Vietnam) Company Limited

Role  
General contractor

Scale  
68,000 m<sup>2</sup>

Construction Duration  
16 months



# MARVEL GARMENT FACTORY

Employer  
Marvel Garment Company Limited

Role  
General contractor

Scale  
85,000 m<sup>2</sup>

Construction Duration  
13 months



# GREEN PLANET DC

Employer  
Green Planet Distribution Centre Joint Stock Company

Role  
D&B General contractor

Scale  
81,634.30 sqm

Construction Duration  
8 months





# VIETTEL HOA LAC TECHNICAL CENTER

Employer  
Viettel Asset Management Company

Role  
General contractor & M.E.P

Scale  
21,476 m<sup>2</sup>

Construction Duration  
9 months



# WAREHOUSE FOR LEASE OF SAO DAU

Employer  
Sao Dau Joint Stock Company

Role  
General contractor

Scale  
59,540 m<sup>2</sup>

Construction Duration  
7 months



# PROJECT 05 – BW HAI DUONG

Employer  
BW Industrial Development Joint Stock Company

Role  
General contractor

Scale  
63,000 m<sup>2</sup>

Construction Duration  
6 months



# LOGOS BAC NINH LOGISTICS WAREHOUSE

Employer  
Logos Group

Role  
General contractor

Scale  
81,451 m<sup>2</sup>

Construction Duration  
9 months





# Infrastructure project

## WATERPOINT

Employer  
Nam Long Investment Corporation

Construction Duration  
19 months

Role  
General contractor



# INVESTING IN BUILDING INFRASTRUCTURE OF LONG THANH HIGH-TECH INDUSTRIAL PARK

Employer  
Amata Ctity LongThanh Joint Stock  
Company

Construction Duration  
12 months

Role  
General contractor

Scale:  
120 ha





# SYMBOL OF FUTURE

Newtecons strives to maintain its position as the number 1 General Contractor in Vietnam by attracting excellent and dedicated professionals and by researching and implementing the most modern construction technologies and practices throughout the company. Along with this, Newtecons also commits to our heart and strength to act and to share with the community, from the achievements in the past to the power of the present to continuously **innovate and create the future**, together.





## OUR VISION

We commit to maintain the position as an outstanding Construction General Contractor with leading economic capacity in Vietnam, developing as a Multi-industry corporation focusing on construction as its core field.

## OUR MISSION

Newtecons uses credibility and quality as the foundation to develop constructions of Vietnamese stature. We commit to provide the highest benefits to our clients, partners and employees; contributing to develop a sustainable community.

## CORE VALUES

Every Newtecons staff member is happy to serve our distinguished clients with deep passion, professionalism, and enthusiasm.

### INTEGRITY

Integrity is the guideline for every idea and every action of each Newtecons employee.

### UNITY

The strength of unity brings all staff together, heading toward mutual success.

### KINDNESS

Be kind to peers, be kind to the company, be kind to our clients & partners, be kind to family and society, be kind to self.

### OPTIMIZATION

Always proactively improve and offer solutions to operate work efficiently, deliver expert construction to clients, meeting technical - aesthetic standards, optimizing time and cost.

### CREATIVITY

Constantly create and update the latest technologies so that the next project is always better than the last.



# CORPORATE SOCIAL RESPONSIBILITY

Sustainable development is a key focus of Newtecons' development strategy, as reflected throughout the process from vision planning, preparation to operation. As a result, all leaders from Divisions and Departments, along with all employees always comply with sustainable development activities. Newtecons' social responsibility focuses on the following main activities:

## NEWSHARE FUND

Inspired by the traditional sense of solidarity, the Newshare Fund was established to support Newtecons employees in difficult circumstances. The Foundation operates on the basis of Publicity - Transparency - Voluntariness - Non-profit. This is not only an act of sharing, but it also brings encouragement and increases team bond, compassion and solidarity.

Apart from supporting programs for employees, in the future, Newshare Fund will expand its reach to more voluntary social activities and help vulnerable people in society.



## NURTURING TALENT

Newtecons has signed cooperation agreements with many universities, including universities specializing in design & construction such as Ho Chi Minh City University of Technology and Ho Chi Minh City University of Architecture. Newtecons also implements Newtecons Internship programs; Newtecons Ideas - a fund for research and innovation; accompanying

the Youth Union - Newtecons Student's Association, and Experience with Newtecons - Externship, etc. These activities aim to prepare future human resources of the construction industry with practical knowledge and experience, and cultivate tomorrow's talent and a love for the profession, nurturing potential superstars of the future.



SHARING WITH THE COMMUNITY

As part of social responsibility activities, Newtecons regularly engages in relief activities, charity activities to support local communities and provide basic necessities and school supplies to those in need. This comes from the heart and responsibility of all the company staff and other philanthropists, fulfilling the traditional sense of solidarity.



GREEN CONSTRUCTION

Green materials

We choose smart and eco-friendly products, unburnt materials and work with suppliers to increase the amount of recycled materials in our products.



Green energy

At construction sites, we develop detailed construction plans to optimize coordination between divisions; equip ourselves with advanced machinery and technology to improve productivity and simultaneously minimize material loss and save energy.



Waste processing

At construction sites and offices, we have designed and applied water-saving solutions and maximize the use of natural water sources. Sewage from the construction is properly processed before being discharged into the city's system to protect the environment. All waste from construction activities is collected, sorted and processed according to environmental standards by certified third parties.





